

THEM4 antibody

Cat. No. GTX31383

Host	Rabbit
Clonality	Polyclonal
Isotype	IgG
Applications	WB, IHC-P, ELISA
Reactivity	Human, Mouse, Rat

Package
100 µg

Applications

Application Note

*Optimal dilutions/concentrations should be determined by the researcher.

Suggested dilution	Recommended dilution
WB	1 - 2 µg/mL
IHC-P	2.5 µg/mL
ELISA	Assay dependent

Not tested in other applications.

Calculated MW 27 kDa. ([Note](#))

Product Note The additional higher molecular weight bands seen in the immunoblot may represent post-translationally modified TMEM4.

Properties

Form	Liquid
Buffer	PBS
Preservative	0.02% Sodium azide
Storage	Store as concentrated solution. Centrifuge briefly prior to opening vial. For short-term storage (1-2 weeks), store at 4°C. For long-term storage, aliquot and store at -20°C or below. Avoid multiple freeze-thaw cycles.
Concentration	1 mg/ml (Please refer to the vial label for the specific concentration.)
Immunogen	THEM4 antibody was raised against an 18 amino acid synthetic peptide near the center of human THEM4. The immunogen is located within amino acids 60 - 110 of THEM4.
Purification	Purified by antigen-affinity chromatography
Conjugation	Unconjugated



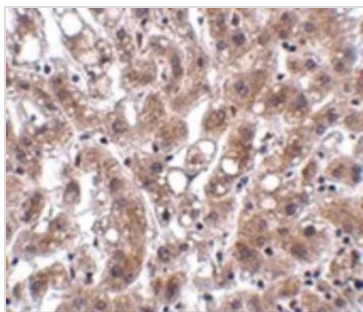
For full product information, images and publications, please visit our [website](#).

Date 2026 / 01 / 11 Page 1 of 2

For laboratory research use only. Not for any clinical, therapeutic, or diagnostic use in humans or animals. Not for animal or human consumption.

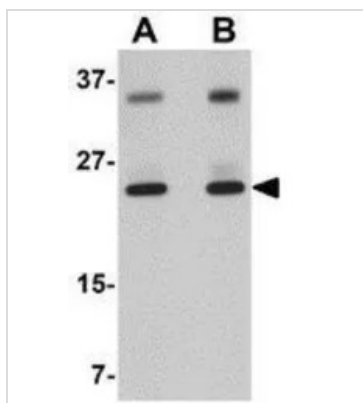
Note

Purchasers shall not, and agree not to enable third parties to, analyze, copy, reverse engineer or otherwise attempt to determine the structure or sequence of the product.

DATA IMAGES

GTx31383 IHC-P Image

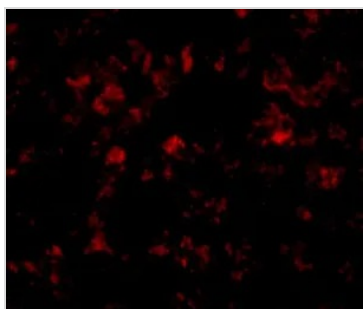
IHC-P analysis of human liver tissue using GTx31383 THEM4 antibody.

Working concentration : 2.5 µg/ml


GTx31383 WB Image

WB analysis of human liver tissue lysate using GTx31383 THEM4 antibody.

Working concentration : (A) 1 and (B) 2 µg/ml


GTx31383 IHC-P Image

IHC-P analysis of human liver tissue using GTx31383 THEM4 antibody.

Working concentration : 20 µg/ml



For full product information, images and publications, please visit our [website](#).