

CtIP antibody

Cat. No. GTX31413

Host	Rabbit
Clonality	Polyclonal
Isotype	IgG
Application	WB, IHC-P, ELISA
Reactivity	Human, Mouse, Rat

Package
100 µg

APPLICATION

Application Note

*Optimal dilutions/concentrations should be determined by the researcher.

Suggested dilution	Recommended dilution
WB	1 - 2 µg/mL
IHC-P	5 µg/mL
ELISA	Assay dependent

Not tested in other applications.

Calculated MW 102 kDa. ([Note](#))

PROPERTIES

Form	Liquid
Buffer	PBS
Preservative	0.02% Sodium azide
Storage	Store as concentrated solution. Centrifuge briefly prior to opening vial. For short-term storage (1-2 weeks), store at 4°C. For long-term storage, aliquot and store at -20°C or below. Avoid multiple freeze-thaw cycles.
Concentration	1 mg/ml (Please refer to the vial label for the specific concentration.)
Immunogen	CtIP antibody was raised against a 14 amino acid synthetic peptide near the center of human CtIP. The immunogen is located within amino acids 430 - 480 of CtIP.
Purification	Purified by antigen-affinity chromatography
Conjugation	Unconjugated

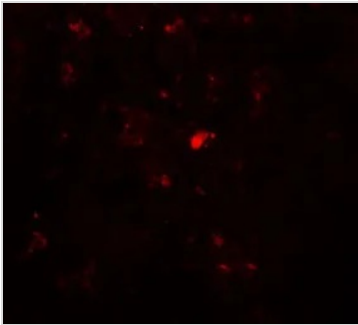
Note For laboratory research use only. Not for any clinical, therapeutic, or diagnostic use in humans or animals. Not for animal or human consumption.

Purchasers shall not, and agree not to enable third parties to, analyze, copy, reverse engineer or otherwise attempt to determine the structure or sequence of the product.



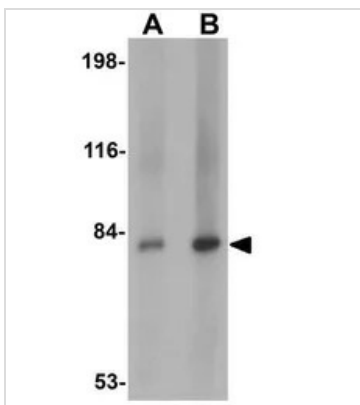
For full product information, images and publications, please visit our [website](#).

DATA IMAGES



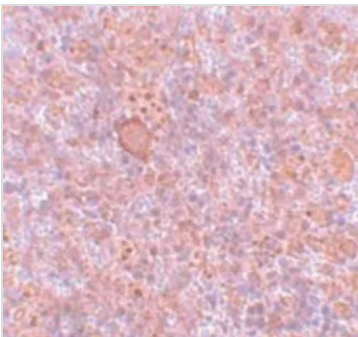
GTX31413 IHC-P Image

IHC-P analysis of rat spleen tissue using GTX31413 CtIP antibody.
Working concentration : 20 µg/ml



GTX31413 WB Image

WB analysis of mouse spleen tissue lysate using GTX31413 CtIP antibody.
Working concentration : (A) 1 and (B) 2 µg/ml



GTX31413 IHC-P Image

IHC-P analysis of rat spleen tissue using GTX31413 CtIP antibody.
Working concentration : 5 µg/ml



For full product information, images and publications, please visit our [website](#).