

ZBTB5 antibody

Cat. No. GTX31423

Host	Rabbit
Clonality	Polyclonal
Isotype	IgG
Applications	WB, IHC-P, ELISA
Reactivity	Human, Mouse, Rat

Package
100 µg

Applications

Application Note

*Optimal dilutions/concentrations should be determined by the researcher.

Suggested dilution	Recommended dilution
WB	1 - 2 µg/mL
IHC-P	2.5 µg/mL
ELISA	Assay dependent

Not tested in other applications.

Calculated MW 74 kDa. ([Note](#))

Product Note At least two isoforms of ZBTB5 are known to exist; this antibody will recognize both isoforms. This antibody is predicted to not cross-react with other ZBTB protein family members.

Properties

Form	Liquid
Buffer	PBS
Preservative	0.02% Sodium azide
Storage	Store as concentrated solution. Centrifuge briefly prior to opening vial. For short-term storage (1-2 weeks), store at 4°C. For long-term storage, aliquot and store at -20°C or below. Avoid multiple freeze-thaw cycles.
Concentration	1 mg/ml (Please refer to the vial label for the specific concentration.)
Immunogen	ZBTB5 antibody was raised against a 16 amino acid synthetic peptide near the carboxy terminus of human ZBTB6. The immunogen is located within the last 50 amino acids of ZBTB5.
Purification	Purified by antigen-affinity chromatography
Conjugation	Unconjugated



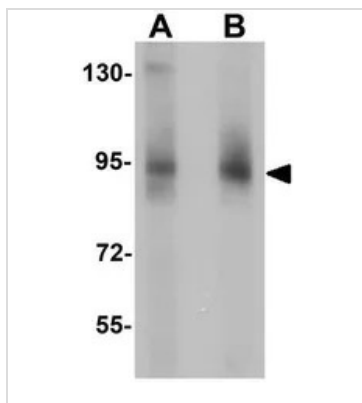
For full product information, images and publications, please visit our [website](#).

For laboratory research use only. Not for any clinical, therapeutic, or diagnostic use in humans or animals. Not for animal or human consumption.

Note

Purchasers shall not, and agree not to enable third parties to, analyze, copy, reverse engineer or otherwise attempt to determine the structure or sequence of the product.

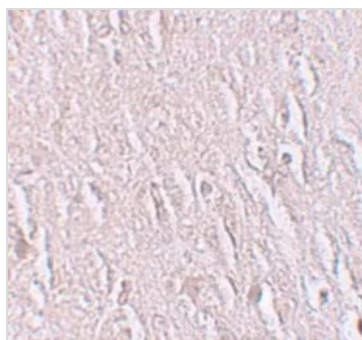
DATA IMAGES



GTX31423 WB Image

WB analysis of mouse brain tissue lysate using GTX31423 ZBTB5 antibody.

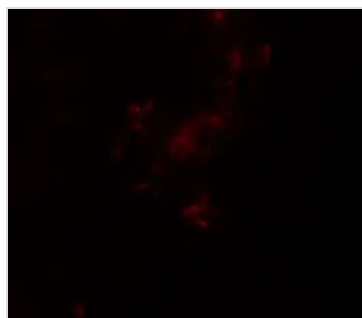
Working concentration : (A) 1 and (B) 2 µg/ml



GTX31423 IHC-P Image

IHC-P analysis of human brain tissue using GTX31423 ZBTB5 antibody.

Working concentration : 2.5 µg/ml



GTX31423 IHC-P Image

IHC-P analysis of human brain tissue using GTX31423 ZBTB5 antibody.

Working concentration : 20 µg/ml



For full product information, images and publications, please visit our [website](#).