

TM4SF1 antibody

Cat. No. GTX31430

Host	Rabbit
Clonality	Polyclonal
Isotype	IgG
Applications	WB, IHC-P, ELISA
Reactivity	Human, Mouse, Rat

Package
100 µg

Applications

Application Note

*Optimal dilutions/concentrations should be determined by the researcher.

Suggested dilution	Recommended dilution
WB	0.5 - 1 µg/mL
IHC-P	5 µg/mL
ELISA	Assay dependent

Not tested in other applications.

Calculated MW 22 kDa. ([Note](#))

Product Note At least three isoforms of TM4SF1 are known to exist; this antibody will recognize only the two largest isoforms. TM4SF1 antibody is predicted to not cross-react with other tetraspanin proteins.

Properties

Form	Liquid
Buffer	PBS
Preservative	0.02% Sodium azide
Storage	Store as concentrated solution. Centrifuge briefly prior to opening vial. For short-term storage (1-2 weeks), store at 4°C. For long-term storage, aliquot and store at -20°C or below. Avoid multiple freeze-thaw cycles.
Concentration	1 mg/ml (Please refer to the vial label for the specific concentration.)
Immunogen	TM4SF1 antibody was raised against an 18 amino acid synthetic peptide near the amino terminus of human TM4SF1. The immunogen is located within the first 50 amino acids of TM4SF1.
Purification	Purified by antigen-affinity chromatography
Conjugation	Unconjugated



For full product information, images and publications, please visit our [website](#).

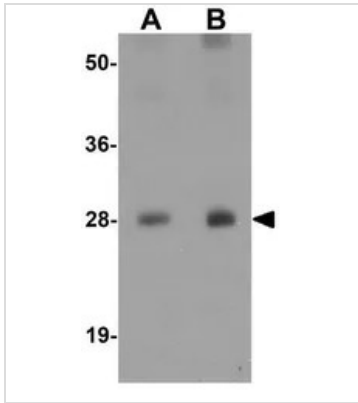
Date 2025 / 12 / 31 Page 1 of 2

For laboratory research use only. Not for any clinical, therapeutic, or diagnostic use in humans or animals. Not for animal or human consumption.

Note

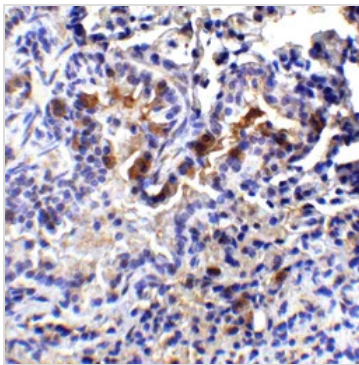
Purchasers shall not, and agree not to enable third parties to, analyze, copy, reverse engineer or otherwise attempt to determine the structure or sequence of the product.

DATA IMAGES



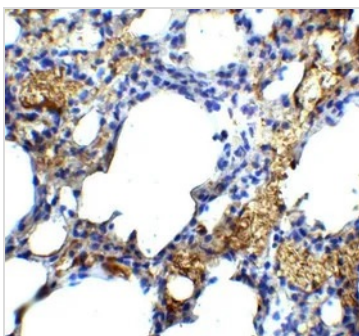
GTX31430 WB Image

WB analysis of human lung tissue lysate using GTX31430 TM4SF1 antibody.
Working concentration : (A) 0.5 and (B) 1 μ g/ml



GTX31430 IHC-P Image

IHC-P analysis of mouse lung tissue using GTX31430 TM4SF1 antibody.
Dilution : 2 μ g/ml



GTX31430 IHC-P Image

IHC-P analysis of mouse lung tissue using GTX31430 TM4SF1 antibody.
Working concentration : 5 μ g/ml



For full product information, images and publications, please visit our [website](https://www.genetex.com).