

Serine palmitoyltransferase 2 antibody

Cat. No. GTX31437

Host	Rabbit
Clonality	Polyclonal
Isotype	IgG
Applications	WB, ICC/IF, ELISA
Reactivity	Human, Mouse, Rat

Package
100 µg

Applications

Application Note

*Optimal dilutions/concentrations should be determined by the researcher.

Suggested dilution	Recommended dilution
WB	1 µg/mL
ICC/IF	10 µg/mL
ELISA	Assay dependent

Not tested in other applications.

Calculated MW 63 kDa. ([Note](#))

Product Note At least three isoforms of SPT2 are known to exist; this antibody will not detect isoform b. SPT2 antibody is predicted to not cross-react with SPT1.

Properties

Form	Liquid
Buffer	PBS
Preservative	0.02% Sodium azide
Storage	Store as concentrated solution. Centrifuge briefly prior to opening vial. For short-term storage (1-2 weeks), store at 4°C. For long-term storage, aliquot and store at -20°C or below. Avoid multiple freeze-thaw cycles.
Concentration	1 mg/ml (Please refer to the vial label for the specific concentration.)
Immunogen	Serine palmitoyltransferase 2 antibody was raised against a 15 amino acid synthetic peptide near the carboxy terminus of human Serine palmitoyltransferase 2. The immunogen is located within the last 50 amino acids of Serine palmitoyltransferase 2.
Purification	Purified by antigen-affinity chromatography
Conjugation	Unconjugated



For full product information, images and publications, please visit our [website](#).

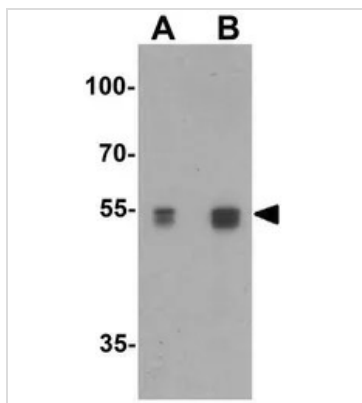
Date 2025 / 12 / 14 Page 1 of 2

For laboratory research use only. Not for any clinical, therapeutic, or diagnostic use in humans or animals. Not for animal or human consumption.

Note

Purchasers shall not, and agree not to enable third parties to, analyze, copy, reverse engineer or otherwise attempt to determine the structure or sequence of the product.

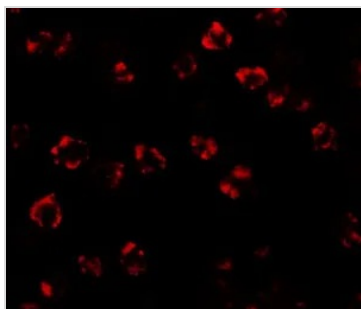
DATA IMAGES



GTx31437 WB Image

WB analysis of 3T3 cell lysate in (A) the absence and (B) the presence of blocking peptide using GTx31437 Serine palmitoyltransferase 2 antibody.

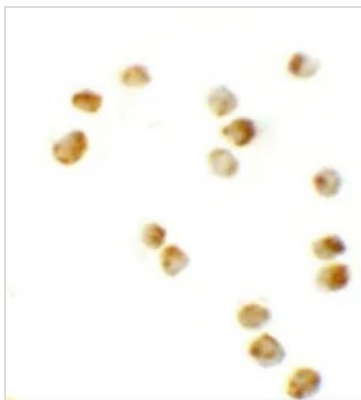
Working concentration : 0.5 µg/ml



GTx31437 ICC/IF Image

ICC/IF analysis of 3T3 cells using GTx31437 Serine palmitoyltransferase 2 antibody.

Working concentration : 20 µg/ml



GTx31437 ICC/IF Image

ICC/IF analysis of 3T3 cells using GTx31437 Serine palmitoyltransferase 2 antibody.

Working concentration : 10 µg/ml



For full product information, images and publications, please visit our [website](#).