

NUMB antibody

Cat. No. GTX31439

| | |
|--------------|-------------------|
| Host | Rabbit |
| Clonality | Polyclonal |
| Isotype | IgG |
| Applications | WB, IHC-P, ELISA |
| Reactivity | Human, Mouse, Rat |

Package
100 µg

Applications

Application Note

*Optimal dilutions/concentrations should be determined by the researcher.

| Suggested dilution | Recommended dilution |
|--------------------|----------------------|
| WB | 0.25 - 0.5 µg/mL |
| IHC-P | 5 µg/mL |
| ELISA | Assay dependent |

Not tested in other applications.

| | |
|---------------|---|
| Calculated MW | 71 kDa. (Note) |
| Product Note | At least four isoforms of NUMB are known to exist; this antibody will detect all of them. |

Properties

| | |
|---------------|--|
| Form | Liquid |
| Buffer | PBS |
| Preservative | 0.02% Sodium azide |
| Storage | Store as concentrated solution. Centrifuge briefly prior to opening vial. For short-term storage (1-2 weeks), store at 4°C. For long-term storage, aliquot and store at -20°C or below. Avoid multiple freeze-thaw cycles. |
| Concentration | 1 mg/ml (Please refer to the vial label for the specific concentration.) |
| Immunogen | NUMB antibody was raised against a 17 amino acid synthetic peptide near the carboxy terminus of human NUMB. The immunogen is located within the last 50 amino acids of NUMB. |
| Purification | Purified by antigen-affinity chromatography |
| Conjugation | Unconjugated |



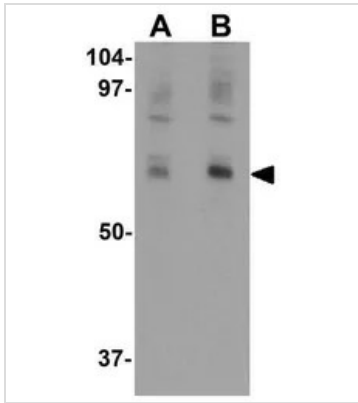
For full product information, images and publications, please visit our [website](#).

For laboratory research use only. Not for any clinical, therapeutic, or diagnostic use in humans or animals. Not for animal or human consumption.

Note

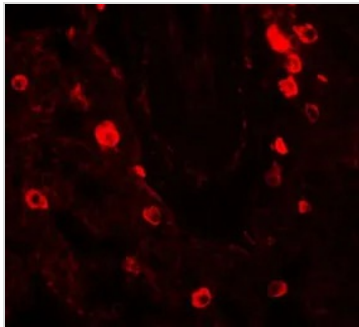
Purchasers shall not, and agree not to enable third parties to, analyze, copy, reverse engineer or otherwise attempt to determine the structure or sequence of the product.

DATA IMAGES



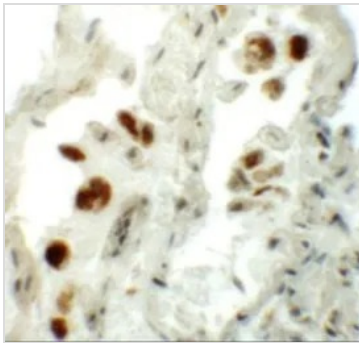
GTX31439 WB Image

WB analysis of mouse lung tissue lysate using GTX31439 NUMB antibody.
Working concentration : (A) 0.25 and (B) 0.5 μ g/ml



GTX31439 IHC-P Image

IHC-P analysis of human lung tissue using GTX31439 NUMB antibody.
Working concentration : 20 μ g/ml



GTX31439 IHC-P Image

IHC-P analysis of human lung tissue using GTX31439 NUMB antibody.
Working concentration : 5 μ g/ml



For full product information, images and publications, please visit our [website](https://www.genetex.com).