

## CCDC141 antibody

Cat. No. GTX31445

Host	Rabbit
Clonality	Polyclonal
Isotype	IgG
Applications	WB, IHC-P, ELISA
Reactivity	Human, Mouse

Package  
100 µg

## Applications

## Application Note

\*Optimal dilutions/concentrations should be determined by the researcher.

Suggested dilution	Recommended dilution
WB	1 µg/mL
IHC-P	5 µg/mL
ELISA	Assay dependent

Not tested in other applications.

**Calculated MW** 166 kDa. ([Note](#))

**Product Note** At least four isoforms of CCDC141 are known to exist.

## Properties

Form	Liquid
Buffer	PBS
Preservative	0.02% Sodium azide
Storage	Store as concentrated solution. Centrifuge briefly prior to opening vial. For short-term storage (1-2 weeks), store at 4°C. For long-term storage, aliquot and store at -20°C or below. Avoid multiple freeze-thaw cycles.
Concentration	1 mg/ml (Please refer to the vial label for the specific concentration.)
Immunogen	CCDC141 antibody was raised against an 18 amino acid synthetic peptide near the amino terminus of human CCDC141. The immunogen is located within amino acids 40 - 90 of CCDC141.
Purification	Purified by antigen-affinity chromatography
Conjugation	Unconjugated



For full product information, images and publications, please visit our [website](#).

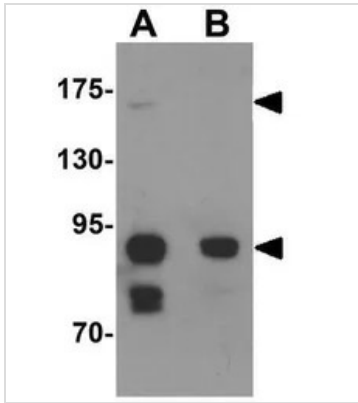
Date 2025 / 05 / 14 Page 1 of 2

For laboratory research use only. Not for any clinical, therapeutic, or diagnostic use in humans or animals. Not for animal or human consumption.

**Note**

Purchasers shall not, and agree not to enable third parties to, analyze, copy, reverse engineer or otherwise attempt to determine the structure or sequence of the product.

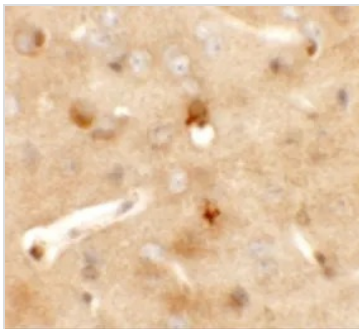
## DATA IMAGES



### GTx31445 WB Image

WB analysis of SK-N-SH cell tissue lysate in (A) the absence and (B) the presence of blocking peptide using GTx31445 CCDC141 antibody.

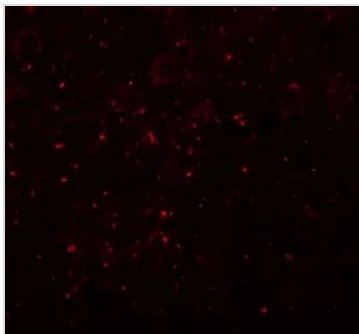
Working concentration : 1 µg/ml



### GTx31445 IHC-P Image

IHC-P analysis of mouse brain tissue using GTx31445 CCDC141 antibody.

Working concentration : 5 µg/ml



### GTx31445 IHC-P Image

IHC-P analysis of mouse brain tissue using GTx31445 CCDC141 antibody.

Working concentration : 20 µg/ml



For full product information, images and publications, please visit our [website](#).