

## ECG2 antibody

Cat. No. GTX31458

Host	Chicken
Clonality	Polyclonal
Isotype	IgY
Applications	WB, IHC-P, ELISA
Reactivity	Human, Mouse, Rat

Package  
100 µg

## Applications

## Application Note

\*Optimal dilutions/concentrations should be determined by the researcher.

Suggested dilution	Recommended dilution
WB	1 µg/mL
IHC-P	5 µg/mL
ELISA	Assay dependent

Not tested in other applications.

Calculated MW	9 kDa. ( <a href="#">Note</a> )
Product Note	ECRG2 antibody is predicted to not cross-react with other ECRG family members

## Properties

Form	Liquid
Buffer	PBS
Preservative	0.02% Sodium azide
Storage	Store as concentrated solution. Centrifuge briefly prior to opening vial. For short-term storage (1-2 weeks), store at 4°C. For long-term storage, aliquot and store at -20°C or below. Avoid multiple freeze-thaw cycles.
Concentration	1 mg/ml (Please refer to the vial label for the specific concentration.)
Immunogen	ECG2 antibody was raised against a 16 amino acid synthetic peptide near the carboxy terminus of human ECG2. The immunogen is located within the last 50 amino acids of ECG2.
Purification	Purified by antigen-affinity chromatography
Conjugation	Unconjugated



For full product information, images and publications, please visit our [website](#).

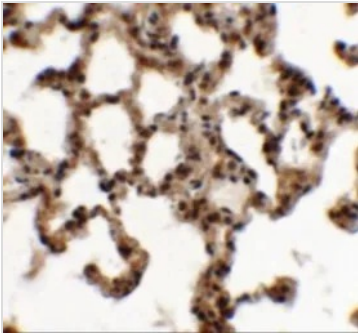
Date 2026 / 01 / 29 Page 1 of 2

For laboratory research use only. Not for any clinical, therapeutic, or diagnostic use in humans or animals. Not for animal or human consumption.

**Note**

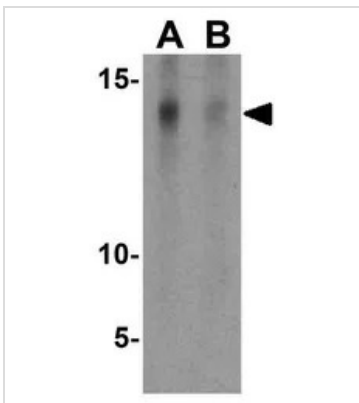
Purchasers shall not, and agree not to enable third parties to, analyze, copy, reverse engineer or otherwise attempt to determine the structure or sequence of the product.

## DATA IMAGES



### GTX31458 IHC-P Image

IHC-P analysis of rat lung tissue using GTX31458 ECG2 antibody.  
Working concentration : 5 µg/ml



### GTX31458 WB Image

WB analysis of A-20 cell lysate in the (A) absence and (B) presence of blocking peptide using GTX31458 ECG2 antibody.  
Working concentration : 1 µg/ml



For full product information, images and publications, please visit our [website](#).