

## JMJD3 antibody

Cat. No. GTX31466

Host	Rabbit
Clonality	Polyclonal
Isotype	IgG
Applications	WB, ICC/IF, IHC-Fr, ELISA
Reactivity	Human, Mouse, Rat

References ( 2 )

Package

100 µg

## Applications

## Application Note

\*Optimal dilutions/concentrations should be determined by the researcher.

Suggested dilution	Recommended dilution
WB	0.5 µg/mL
ICC/IF	2.5 µg/mL
IHC-Fr	Assay dependent
ELISA	Assay dependent

Not tested in other applications.

**Calculated MW** 177 kDa. ( [Note](#) )

**Product Note** This antibody is specific for JMJD3 and will not recognize other JMJD proteins.

## Properties

Form	Liquid
Buffer	PBS
Preservative	0.02% Sodium azide
Storage	Store as concentrated solution. Centrifuge briefly prior to opening vial. For short-term storage (1-2 weeks), store at 4°C. For long-term storage, aliquot and store at -20°C or below. Avoid multiple freeze-thaw cycles.
Concentration	1 mg/ml (Please refer to the vial label for the specific concentration.)
Immunogen	JMJD3 antibody was raised against a 16 amino acid synthetic peptide from near the amino terminus of human JMJD3. The immunogen is located within amino acids 1370 - 1420 of JMJD3.
Purification	Purified by antigen-affinity chromatography
Conjugation	Unconjugated



For full product information, images and publications, please visit our [website](#).

For laboratory research use only. Not for any clinical, therapeutic, or diagnostic use in humans or animals. Not for animal or human consumption.

## Note

Purchasers shall not, and agree not to enable third parties to, analyze, copy, reverse engineer or otherwise attempt to determine the structure or sequence of the product.

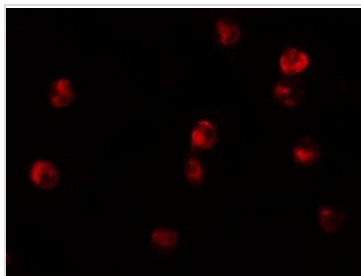
## DATA IMAGES



### GTX31466 ICC/IF Image

ICC/IF analysis of K562 cells using GTX31466 JMJD3 antibody.

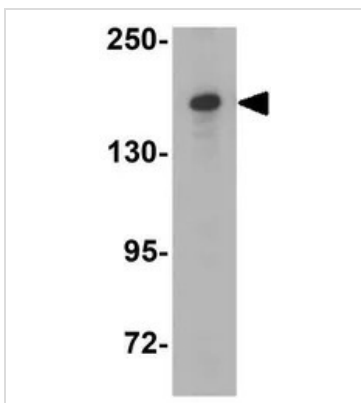
Working concentration : 2.5 µg/ml



### GTX31466 ICC/IF Image

ICC/IF analysis of K562 cells using GTX31466 JMJD3 antibody.

Working concentration : 20 µg/ml



### GTX31466 WB Image

WB analysis of HeLa cell lysate using GTX31466 JMJD3 antibody.

Working concentration : 0.25 µg/ml



For full product information, images and publications, please visit our [website](#).