

CASKIN2 antibody

Cat. No. GTX31467

Host	Rabbit
Clonality	Polyclonal
Isotype	IgG
Applications	WB, ICC/IF, ELISA
Reactivity	Human

Package
100 µg

Applications

Application Note

*Optimal dilutions/concentrations should be determined by the researcher.

Suggested dilution	Recommended dilution
WB	1 µg/mL
ICC/IF	2.5 µg/mL
ELISA	Assay dependent

Not tested in other applications.

Calculated MW 127 kDa. ([Note](#))

Product Note CASKIN2 antibody is predicted to not cross-react with other CASKIN family members. Three isoforms of CASKIN2 are known to exist; this antibody will not detect the shortest isoform.

Properties

Form	Liquid
Buffer	PBS
Preservative	0.02% Sodium azide
Storage	Store as concentrated solution. Centrifuge briefly prior to opening vial. For short-term storage (1-2 weeks), store at 4°C. For long-term storage, aliquot and store at -20°C or below. Avoid multiple freeze-thaw cycles.
Concentration	1 mg/ml (Please refer to the vial label for the specific concentration.)
Immunogen	CASKIN2 antibody was raised against a 19 amino acid synthetic peptide near the amino terminus of human CASKIN2. The immunogen is located within amino acids 380 - 430 of CASKIN2.
Purification	Purified by antigen-affinity chromatography
Conjugation	Unconjugated



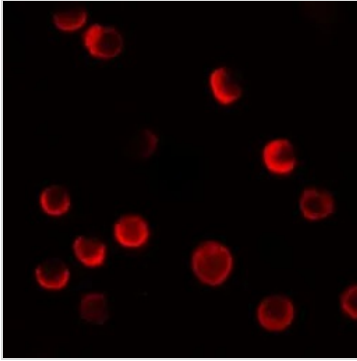
For full product information, images and publications, please visit our [website](#).

For laboratory research use only. Not for any clinical, therapeutic, or diagnostic use in humans or animals. Not for animal or human consumption.

Note

Purchasers shall not, and agree not to enable third parties to, analyze, copy, reverse engineer or otherwise attempt to determine the structure or sequence of the product.

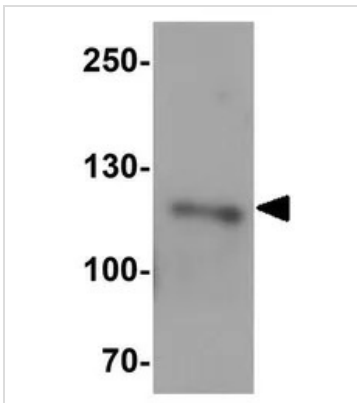
DATA IMAGES



GTX31467 ICC/IF Image

ICC/IF analysis of HeLa cells using GTX31467 CASKIN2 antibody.

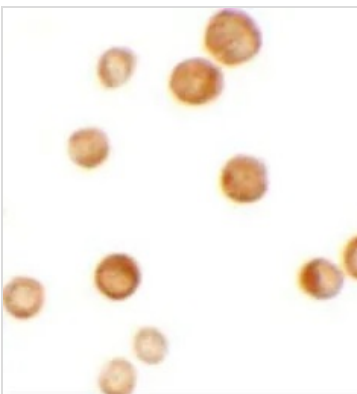
Working concentration : 20 µg/ml



GTX31467 WB Image

WB analysis of HeLa cell lysate using GTX31467 CASKIN2 antibody.

Working concentration : 1 µg/ml



GTX31467 ICC/IF Image

ICC/IF analysis of HeLa cells using GTX31467 CASKIN2 antibody.

Working concentration : 2.5 µg/ml



For full product information, images and publications, please visit our [website](#).