

# FOXD4L1 antibody

**Cat. No. GTX31468**

<b>Host</b>	Rabbit
<b>Clonality</b>	Polyclonal
<b>Isotype</b>	IgG
<b>Applications</b>	WB, ICC/IF, ELISA
<b>Reactivity</b>	Human, Mouse

**Package**  
100 µg

## Applications

### Application Note

\*Optimal dilutions/concentrations should be determined by the researcher.

Suggested dilution	Recommended dilution
WB	1 µg/mL
ICC/IF	10 µg/ml
ELISA	Assay dependent

Not tested in other applications.

**Calculated MW** 44 kDa. ( [Note](#) )

**Product Note** This antibody is predicted to not cross-react with any FOXD4 protein family members

## Properties

<b>Form</b>	Liquid
<b>Buffer</b>	PBS
<b>Preservative</b>	0.02% Sodium azide
<b>Storage</b>	Store as concentrated solution. Centrifuge briefly prior to opening vial. For short-term storage (1-2 weeks), store at 4°C. For long-term storage, aliquot and store at -20°C or below. Avoid multiple freeze-thaw cycles.
<b>Concentration</b>	1 mg/ml (Please refer to the vial label for the specific concentration.)
<b>Immunogen</b>	FOXD4L1 antibody was raised against a 18 amino acid synthetic peptide near the carboxy terminus of human FOXD4L1. The immunogen is located within the last 50 amino acids of FOXD4L1.
<b>Purification</b>	Purified by antigen-affinity chromatography
<b>Conjugation</b>	Unconjugated



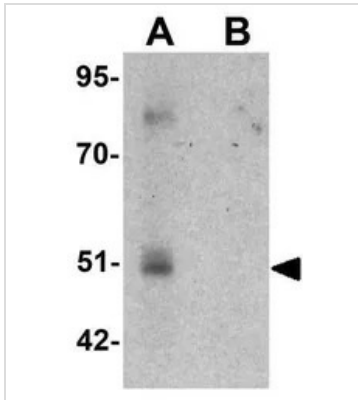
For full product information, images and publications, please visit our [website](#).

For laboratory research use only. Not for any clinical, therapeutic, or diagnostic use in humans or animals. Not for animal or human consumption.

**Note**

Purchasers shall not, and agree not to enable third parties to, analyze, copy, reverse engineer or otherwise attempt to determine the structure or sequence of the product.

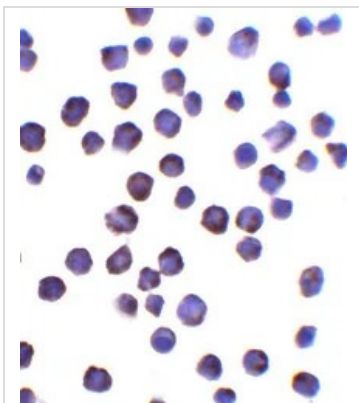
## DATA IMAGES



### GTX31468 WB Image

WB analysis of A-20 cell lysate in (A) the absence and (B) the presence of blocking peptide using GTX31468 FOXD4L1 antibody.

Working concentration : 1 µg/ml



### GTX31468 ICC/IF Image

ICC/IF analysis of MCF7 cells using GTX31468 FOXD4L1 antibody.

Working concentration : 10 µg/ml



For full product information, images and publications, please visit our [website](#).