

Nkx2.2 antibody

Cat. No. GTX31470

Host	Rabbit
Clonality	Polyclonal
Isotype	IgG
Applications	WB, IHC-P, ELISA
Reactivity	Human, Mouse, Rat

Package
100 µg

Applications

Application Note

*Optimal dilutions/concentrations should be determined by the researcher.

Suggested dilution	Recommended dilution
WB	1 µg/mL
IHC-P	2.5 µg/mL
ELISA	Assay dependent

Not tested in other applications.

Calculated MW	30 kDa. (Note)
Product Note	NKX2-2 antibody is predicted to not cross-react with other NK2 homeobox family members.

Properties

Form	Liquid
Buffer	PBS
Preservative	0.02% Sodium azide
Storage	Store as concentrated solution. Centrifuge briefly prior to opening vial. For short-term storage (1-2 weeks), store at 4°C. For long-term storage, aliquot and store at -20°C or below. Avoid multiple freeze-thaw cycles.
Concentration	1 mg/ml (Please refer to the vial label for the specific concentration.)
Immunogen	NKX2-2 antibody was raised against a 19 amino acid synthetic peptide near the center of human NKX2-2. The immunogen is located within amino acids 90 - 140 of NKX2-2.
Purification	Purified by antigen-affinity chromatography
Conjugation	Unconjugated

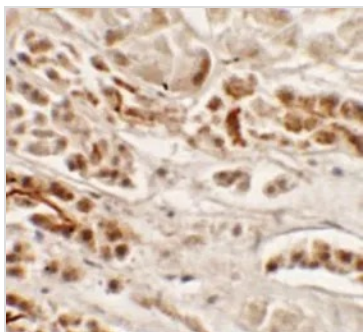


For full product information, images and publications, please visit our [website](#).

For laboratory research use only. Not for any clinical, therapeutic, or diagnostic use in humans or animals. Not for animal or human consumption.

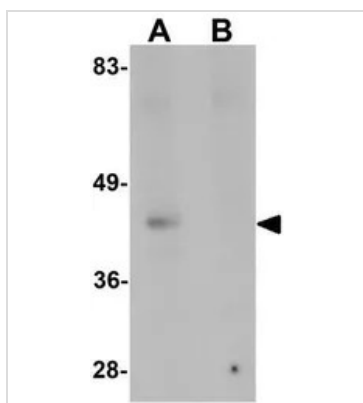
Note

Purchasers shall not, and agree not to enable third parties to, analyze, copy, reverse engineer or otherwise attempt to determine the structure or sequence of the product.

DATA IMAGES

GTX31470 IHC-P Image

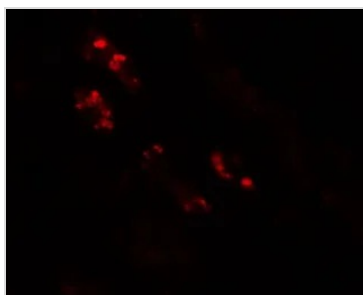
IHC-P analysis of human kidney tissue using GTX31470 Nkx2.2 antibody.

Working concentration : 2.5 µg/ml


GTX31470 WB Image

WB analysis of rat kidney tissue lysate in (A) the absence and (B) the presence of blocking peptide using GTX31470 Nkx2.2 antibody.

Working concentration : 1 µg/ml


GTX31470 IHC-P Image

IHC-P analysis of human kidney tissue using GTX31470 Nkx2.2 antibody.

Working concentration : 20 µg/ml



For full product information, images and publications, please visit our [website](https://www.genetex.com).