

DCP2 antibody

Cat. No. GTX31499

Host	Rabbit
Clonality	Polyclonal
Isotype	IgG
Applications	WB, IHC-P, ELISA
Reactivity	Human, Mouse, Rat

Package
100 µg

Applications

Application Note

*Optimal dilutions/concentrations should be determined by the researcher.

Suggested dilution	Recommended dilution
WB	1 µg/mL
IHC-P	20 µg/mL
ELISA	Assay dependent

Not tested in other applications.

Calculated MW 48 kDa. ([Note](#))

Properties

Form	Liquid
Buffer	PBS
Preservative	0.02% Sodium azide
Storage	Store as concentrated solution. Centrifuge briefly prior to opening vial. For short-term storage (1-2 weeks), store at 4°C. For long-term storage, aliquot and store at -20°C or below. Avoid multiple freeze-thaw cycles.
Concentration	1 mg/ml (Please refer to the vial label for the specific concentration.)
Immunogen	DCP2 antibody was raised against an 18 amino acid synthetic peptide near the carboxy terminus of human DCP2. The immunogen is located within amino acids 340 - 390 of DCP2.
Purification	Purified by antigen-affinity chromatography
Conjugation	Unconjugated

Note

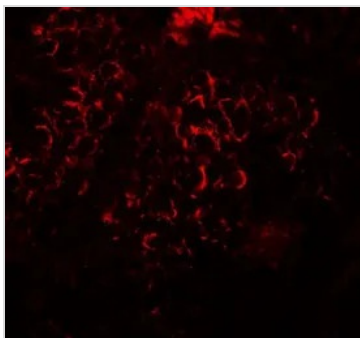
For laboratory research use only. Not for any clinical, therapeutic, or diagnostic use in humans or animals. Not for animal or human consumption.

Purchasers shall not, and agree not to enable third parties to, analyze, copy, reverse engineer or otherwise attempt to determine the structure or sequence of the product.



For full product information, images and publications, please visit our [website](#).

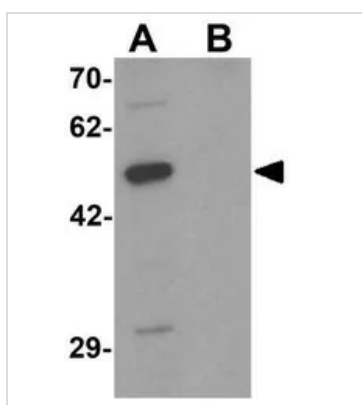
DATA IMAGES



GTX31499 IHC-P Image

IHC-P analysis of human testis tissue using GTX31499 DCP2 antibody.

Working concentration : 20 µg/ml



GTX31499 WB Image

WB analysis of 293 cell lysate in (A) the absence and (B) the presence of blocking peptide using GTX31499 DCP2 antibody.

Working concentration : 1 µg/ml



For full product information, images and publications, please visit our [website](https://www.genetex.com).