

# Lipin 1 antibody

**Cat. No. GTX31547**

<b>Host</b>	Rabbit
<b>Clonality</b>	Polyclonal
<b>Isotype</b>	IgG
<b>Applications</b>	WB, IHC-P, ELISA
<b>Reactivity</b>	Human, Mouse, Rat

**Package**  
100 µg

## Applications

### Application Note

\*Optimal dilutions/concentrations should be determined by the researcher.

Suggested dilution	Recommended dilution
WB	1 - 2 µg/mL
IHC-P	Assay dependent
ELISA	Assay dependent

Not tested in other applications.

**Calculated MW** 99 kDa. ( [Note](#) )

## Properties

<b>Form</b>	Liquid
<b>Buffer</b>	PBS
<b>Preservative</b>	0.02% Sodium azide
<b>Storage</b>	Store as concentrated solution. Centrifuge briefly prior to opening vial. For short-term storage (1-2 weeks), store at 4°C. For long-term storage, aliquot and store at -20°C or below. Avoid multiple freeze-thaw cycles.
<b>Concentration</b>	1 mg/ml (Please refer to the vial label for the specific concentration.)
<b>Immunogen</b>	Lipin 1 antibody was raised against an 18 amino acid peptide near the carboxy terminus of human Lipin 1. The immunogen is located within the last 50 amino acids of Lipin 1.
<b>Purification</b>	Purified by antigen-affinity chromatography
<b>Conjugation</b>	Unconjugated

### Note

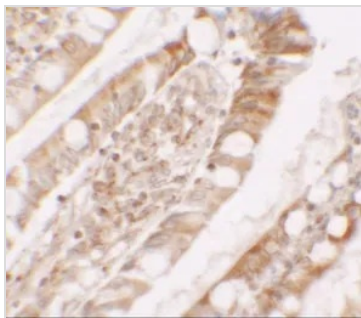
For laboratory research use only. Not for any clinical, therapeutic, or diagnostic use in humans or animals. Not for animal or human consumption.

Purchasers shall not, and agree not to enable third parties to, analyze, copy, reverse engineer or otherwise attempt to determine the structure or sequence of the product.



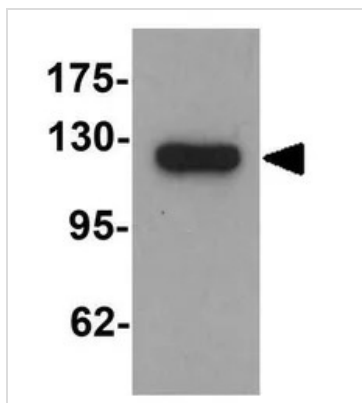
For full product information, images and publications, please visit our [website](#).

## DATA IMAGES



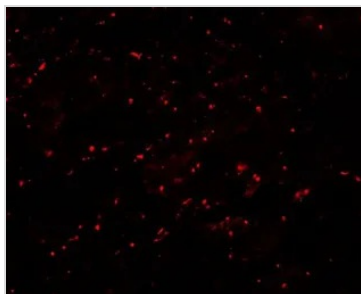
### GTX31547 IHC-P Image

IHC-P analysis of human small intestine tissue using GTX31547 Lipin 1 antibody.  
Working concentration : 5 µg/ml



### GTX31547 WB Image

WB analysis of K562 cell lysate using GTX31547 Lipin 1 antibody.  
Working concentration : 1 µg/ml



### GTX31547 IHC-P Image

IHC-P analysis of human small intestine tissue using GTX31547 Lipin 1 antibody.  
Working concentration : 20 µg/ml



For full product information, images and publications, please visit our [website](https://www.genetex.com).