

CBP80 antibody

Cat. No. GTX31548

Host	Rabbit
Clonality	Polyclonal
Isotype	IgG
Applications	WB, ICC/IF, ELISA
Reactivity	Human, Mouse, Rat

Package
100 µg

Applications

Application Note

*Optimal dilutions/concentrations should be determined by the researcher.

Suggested dilution	Recommended dilution
WB	1 - 2 µg/mL
ICC/IF	Assay dependent
ELISA	Assay dependent

Not tested in other applications.

Calculated MW	92 kDa. (Note)
Product Note	At least two isoforms are known to exist; this antibody will detect both isoforms.

Properties

Form	Liquid
Buffer	PBS
Preservative	0.02% Sodium azide
Storage	Store as concentrated solution. Centrifuge briefly prior to opening vial. For short-term storage (1-2 weeks), store at 4°C. For long-term storage, aliquot and store at -20°C or below. Avoid multiple freeze-thaw cycles.
Concentration	1 mg/ml (Please refer to the vial label for the specific concentration.)
Immunogen	CBP80 antibody was raised against a 17 amino acid peptide near the center of human CBP80. The immunogen is located within amino acids 420 - 470 of CBP80.
Purification	Purified by antigen-affinity chromatography
Conjugation	Unconjugated



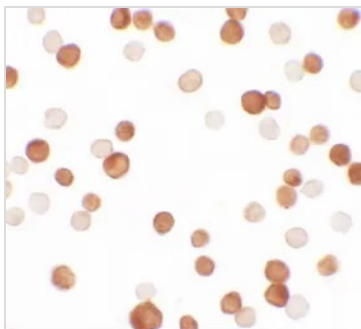
For full product information, images and publications, please visit our [website](#).

For laboratory research use only. Not for any clinical, therapeutic, or diagnostic use in humans or animals. Not for animal or human consumption.

Note

Purchasers shall not, and agree not to enable third parties to, analyze, copy, reverse engineer or otherwise attempt to determine the structure or sequence of the product.

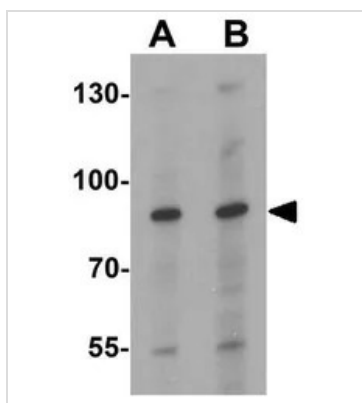
DATA IMAGES



GTX31548 ICC/IF Image

ICC/IF analysis of HeLa cells using GTX31548 CBP80 antibody.

Working concentration : 2.5 µg/ml



GTX31548 WB Image

WB analysis of HeLa cell lysate using GTX31548 CBP80 antibody.

Working concentration : (A) 1 and (B) 2 µg/ml



For full product information, images and publications, please visit our [website](#).