

## FGFR3 antibody

Cat. No. GTX31549

<b>Host</b>	Rabbit
<b>Clonality</b>	Polyclonal
<b>Isotype</b>	IgG
<b>Applications</b>	WB, IHC-P, ELISA
<b>Reactivity</b>	Human, Mouse, Rat

References ( 1 )

Package

100 µg

## Applications

## Application Note

\*Optimal dilutions/concentrations should be determined by the researcher.

Suggested dilution	Recommended dilution
WB	1 - 2 µg/mL
IHC-P	Assay dependent
ELISA	Assay dependent

Not tested in other applications.

**Calculated MW** 88 kDa. ( [Note](#) )

**Product Note** At least three isoforms of FGFR3 are known to exist; this antibody will detect all three.

## Properties

<b>Form</b>	Liquid
<b>Buffer</b>	PBS
<b>Preservative</b>	0.02% Sodium azide
<b>Storage</b>	Store as concentrated solution. Centrifuge briefly prior to opening vial. For short-term storage (1-2 weeks), store at 4°C. For long-term storage, aliquot and store at -20°C or below. Avoid multiple freeze-thaw cycles.
<b>Concentration</b>	1 mg/ml (Please refer to the vial label for the specific concentration.)
<b>Immunogen</b>	FGFR3 antibody was raised against a 19 amino acid peptide near the carboxy terminus of human FGFR3. The immunogen is located within amino acids 630 - 680 of FGFR3.
<b>Purification</b>	Purified by antigen-affinity chromatography
<b>Conjugation</b>	Unconjugated



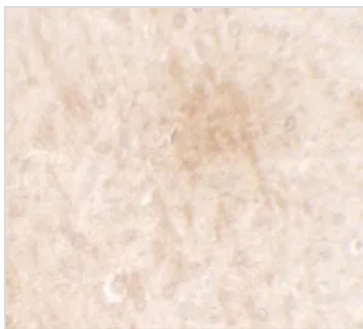
For full product information, images and publications, please visit our [website](#).

For laboratory research use only. Not for any clinical, therapeutic, or diagnostic use in humans or animals. Not for animal or human consumption.

**Note**

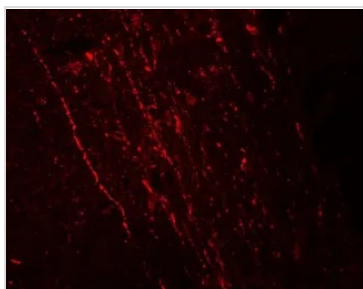
Purchasers shall not, and agree not to enable third parties to, analyze, copy, reverse engineer or otherwise attempt to determine the structure or sequence of the product.

## DATA IMAGES

**GTX31549 IHC-P Image**

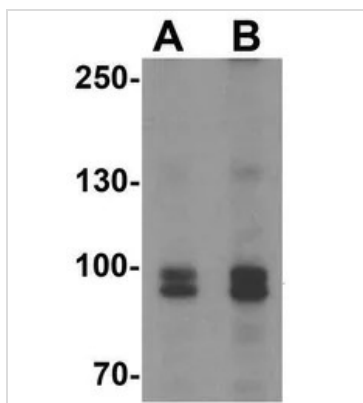
IHC-P analysis of rat brain tissue using GTX31549 FGFR3 antibody.

Working concentration : 2.5 µg/ml

**GTX31549 IHC-P Image**

IHC-P analysis of rat brain tissue using GTX31549 FGFR3 antibody.

Working concentration : 20 µg/ml

**GTX31549 WB Image**

WB analysis of SK-N-SH cell lysate using GTX31549 FGFR3 antibody.

Working concentration : (A) 0.5 and (B) 1 µg/ml



For full product information, images and publications, please visit our [website](#).