

## CD66e antibody

Cat. No. GTX31551

Host	Rabbit
Clonality	Polyclonal
Isotype	IgG
Applications	WB, IHC-P, ELISA
Reactivity	Human, Mouse, Rat

Package  
100 µg

## Applications

## Application Note

\*Optimal dilutions/concentrations should be determined by the researcher.

Suggested dilution	Recommended dilution
WB	1 - 2 µg/mL
IHC-P	Assay dependent
ELISA	Assay dependent

Not tested in other applications.

Calculated MW 77 kDa. ( [Note](#) )

Product Note This antibody is predicted to not cross-react with other CEACAM protein family members.

## Properties

Form	Liquid
Buffer	PBS
Preservative	0.02% Sodium azide
Storage	Store as concentrated solution. Centrifuge briefly prior to opening vial. For short-term storage (1-2 weeks), store at 4°C. For long-term storage, aliquot and store at -20°C or below. Avoid multiple freeze-thaw cycles.
Concentration	1 mg/ml (Please refer to the vial label for the specific concentration.)
Immunogen	CD66e antibody was raised against a 15 amino acid peptide near the center of human CD66e. The immunogen is located within amino acids 310 - 360 of CD66e .
Purification	Purified by antigen-affinity chromatography
Conjugation	Unconjugated



For full product information, images and publications, please visit our [website](#).

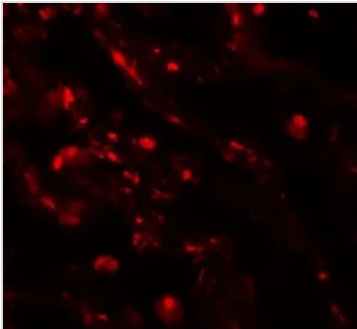
Date 2025 / 07 / 18 Page 1 of 2

For laboratory research use only. Not for any clinical, therapeutic, or diagnostic use in humans or animals. Not for animal or human consumption.

**Note**

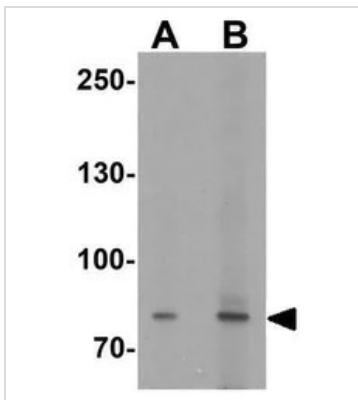
Purchasers shall not, and agree not to enable third parties to, analyze, copy, reverse engineer or otherwise attempt to determine the structure or sequence of the product.

## DATA IMAGES



### GTX31551 IHC-P Image

IHC-P analysis of human lung tissue using GTX31551 CD66e antibody.  
Working concentration : 20 µg/ml



### GTX31551 WB Image

WB analysis of rat lung tissue lysate using GTX31551 CD66e antibody.  
Working concentration : (A) 1 and (B) 2 µg/ml



For full product information, images and publications, please visit our [website](https://www.genetex.com).