

ERAP1 antibody

Cat. No. GTX31553

Host	Rabbit
Clonality	Polyclonal
Isotype	IgG
Applications	WB, IHC-P, ELISA
Reactivity	Human, Mouse

Package
100 µg

Applications

Application Note

*Optimal dilutions/concentrations should be determined by the researcher.

Suggested dilution	Recommended dilution
WB	1 - 2 µg/mL
IHC-P	Assay dependent
ELISA	Assay dependent

Not tested in other applications.

Calculated MW 107 kDa. ([Note](#))

Product Note

At least two isoforms of ERAP1 are known to exist; this antibody will detect both isoforms. ERAP1 antibody is predicted to not cross-react with ERAP2.

Properties

Form	Liquid
Buffer	PBS
Preservative	0.02% Sodium azide
Storage	Store as concentrated solution. Centrifuge briefly prior to opening vial. For short-term storage (1-2 weeks), store at 4°C. For long-term storage, aliquot and store at -20°C or below. Avoid multiple freeze-thaw cycles.
Concentration	1 mg/ml (Please refer to the vial label for the specific concentration.)
Immunogen	ERAP1 antibody was raised against a 19 amino acid peptide near the carboxy terminus of human ERAP. The immunogen is located within amino acids 730 - 780 of ERAP1 .
Purification	Purified by antigen-affinity chromatography
Conjugation	Unconjugated



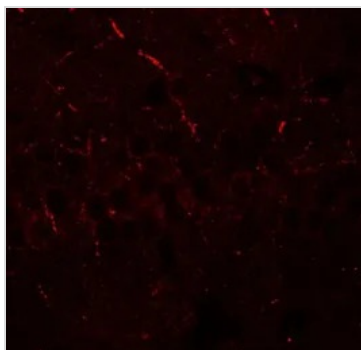
For full product information, images and publications, please visit our [website](#).

For laboratory research use only. Not for any clinical, therapeutic, or diagnostic use in humans or animals. Not for animal or human consumption.

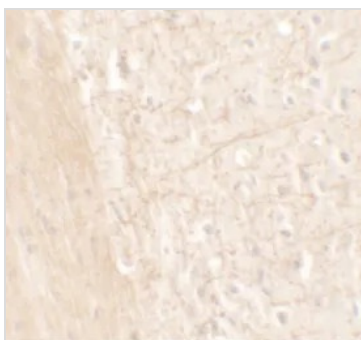
Note

Purchasers shall not, and agree not to enable third parties to, analyze, copy, reverse engineer or otherwise attempt to determine the structure or sequence of the product.

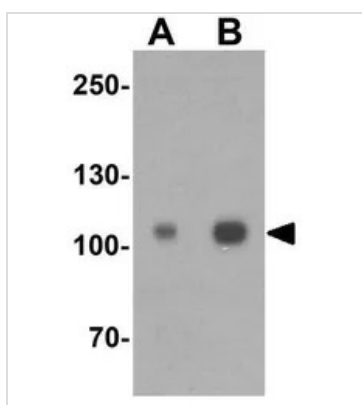
DATA IMAGES

**GTX31553 IHC-P Image**

IHC-P analysis of mouse brain tissue using GTX31553 ERAP1 antibody.
Working concentration : 20 µg/ml

**GTX31553 IHC-P Image**

IHC-P analysis of mouse brain tissue using GTX31553 ERAP1 antibody.
Working concentration : 5 µg/ml

**GTX31553 WB Image**

WB analysis of SK-N-SH cell lysate using GTX31553 ERAP1 antibody.
Working concentration : (A) 1 and (B) 2 µg/ml



For full product information, images and publications, please visit our [website](#).