

IL22 antibody

Cat. No. GTX31563

| | |
|---------------------|-------------------|
| Host | Rabbit |
| Clonality | Polyclonal |
| Isotype | IgG |
| Applications | WB, ICC/IF, ELISA |
| Reactivity | Human, Mouse, Rat |

Package
100 µg

Applications

Application Note

*Optimal dilutions/concentrations should be determined by the researcher.

| Suggested dilution | Recommended dilution |
|--------------------|----------------------|
| WB | 0.5 µg/mL |
| ICC/IF | 5 µg/mL |
| ELISA | Assay dependent |

Not tested in other applications.

Calculated MW 20 kDa. ([Note](#))

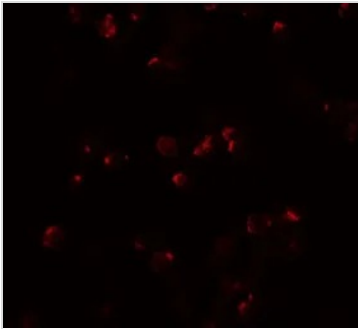
Properties

| | |
|----------------------|--|
| Form | Liquid |
| Buffer | PBS |
| Preservative | 0.02% Sodium azide |
| Storage | Store as concentrated solution. Centrifuge briefly prior to opening vial. For short-term storage (1-2 weeks), store at 4°C. For long-term storage, aliquot and store at -20°C or below. Avoid multiple freeze-thaw cycles. |
| Concentration | 1 mg/ml (Please refer to the vial label for the specific concentration.) |
| Immunogen | IL-22 antibody was raised against a 17 amino acid peptide near the center of human IL-22. The immunogen is located within amino acids 90 - 140 of IL-22. |
| Purification | Purified by antigen-affinity chromatography |
| Conjugation | Unconjugated |
| Note | For laboratory research use only. Not for any clinical, therapeutic, or diagnostic use in humans or animals. Not for animal or human consumption. Purchasers shall not, and agree not to enable third parties to, analyze, copy, reverse engineer or otherwise attempt to determine the structure or sequence of the product. |



For full product information, images and publications, please visit our [website](#).

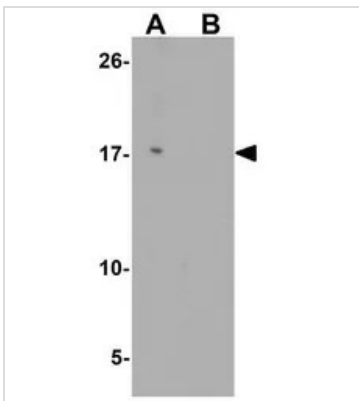
DATA IMAGES

**GTX31563 ICC/IF Image**

ICC/IF analysis of HeLa cells using GTX31563 IL22 antibody.
Working concentration : 20 µg/ml

**GTX31563 ICC/IF Image**

ICC/IF analysis of HeLa cells using GTX31563 IL22 antibody.
Working concentration : 5 µg/ml

**GTX31563 WB Image**

WB analysis of HeLa cell lysate in (A) the absence and (B) the presence of blocking peptide using GTX31563 IL22 antibody.
Working concentration : 0.5 µg/ml



For full product information, images and publications, please visit our [website](#).