

# TRPV4 antibody

**Cat. No. GTX31567**

<b>Host</b>	Rabbit
<b>Clonality</b>	Polyclonal
<b>Isotype</b>	IgG
<b>Applications</b>	WB, IHC-P, ELISA
<b>Reactivity</b>	Human

**Package**  
100 µg

## Applications

### Application Note

\*Optimal dilutions/concentrations should be determined by the researcher.

Suggested dilution	Recommended dilution
WB	1 µg/mL
IHC-P	2 µg/mL
ELISA	Assay dependent

Not tested in other applications.

**Calculated MW** 98 kDa. ( [Note](#) )

**Product Note** TRPV4 antibody is human specific. At least six isoforms of TRPV4 are known to exist. This antibody is predicted to not cross-react with other TRP protein family members.

## Properties

<b>Form</b>	Liquid
<b>Buffer</b>	PBS
<b>Preservative</b>	0.02% Sodium azide
<b>Storage</b>	Store as concentrated solution. Centrifuge briefly prior to opening vial. For short-term storage (1-2 weeks), store at 4°C. For long-term storage, aliquot and store at -20°C or below. Avoid multiple freeze-thaw cycles.
<b>Concentration</b>	1 mg/ml (Please refer to the vial label for the specific concentration.)
<b>Immunogen</b>	TRPV4 antibody was raised against an 18 amino acid peptide near the center of human TRPV4. The immunogen is located within amino acids 380 - 430 of TRPV4.
<b>Purification</b>	Purified by antigen-affinity chromatography
<b>Conjugation</b>	Unconjugated



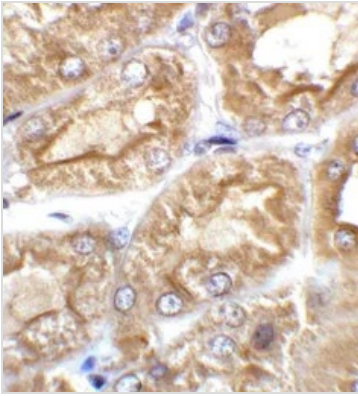
For full product information, images and publications, please visit our [website](#).

For laboratory research use only. Not for any clinical, therapeutic, or diagnostic use in humans or animals. Not for animal or human consumption.

## Note

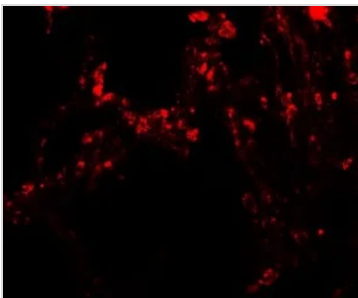
Purchasers shall not, and agree not to enable third parties to, analyze, copy, reverse engineer or otherwise attempt to determine the structure or sequence of the product.

## DATA IMAGES



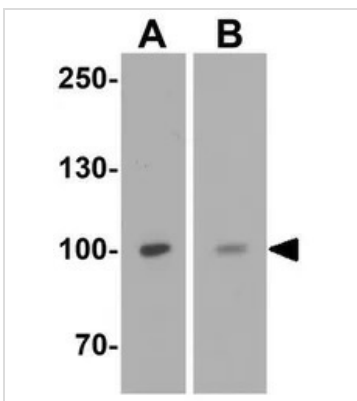
### GTx31567 IHC-P Image

IHC-P analysis of human kidney tissue using GTx31567 TRPV4 antibody.  
Working concentration : 2 µg/ml



### GTx31567 IHC-P Image

IHC-P analysis of human lung tissue using GTx31567 TRPV4 antibody.  
Working concentration : 20 µg/ml



### GTx31567 WB Image

WB analysis of (A) human testis tissue and (B) SK-N-SH cell lysate using GTx31567 TRPV4 antibody.  
Working concentration : 1 µg/ml



For full product information, images and publications, please visit our [website](#).