

MP1 antibody

Cat. No. GTX31568

Host	Rabbit
Clonality	Polyclonal
Isotype	IgG
Applications	WB, IHC-P, ELISA
Reactivity	Human, Mouse, Rat

Package
100 µg

Applications

Application Note

*Optimal dilutions/concentrations should be determined by the researcher.

Suggested dilution	Recommended dilution
WB	1 - 2 µg/mL
IHC-P	5 µg/mL
ELISA	Assay dependent

Not tested in other applications.

Calculated MW 14 kDa. ([Note](#))

Product Note At least two isoforms of LAMTOR3 are known to exist; this antibody will detect both isoforms. LAMTOR3 antibody is predicted to not cross-react with other LAMTOR family proteins.

Properties

Form	Liquid
Buffer	PBS
Preservative	0.02% Sodium azide
Storage	Store as concentrated solution. Centrifuge briefly prior to opening vial. For short-term storage (1-2 weeks), store at 4°C. For long-term storage, aliquot and store at -20°C or below. Avoid multiple freeze-thaw cycles.
Concentration	1 mg/ml (Please refer to the vial label for the specific concentration.)
Immunogen	MP1 antibody was raised against an 15 amino acid peptide near the center of human MP1. The immunogen is located within amino acids 40 - 90 of MP1.
Purification	Purified by antigen-affinity chromatography
Conjugation	Unconjugated



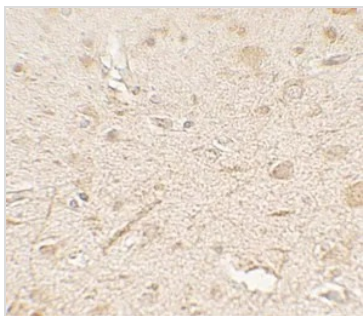
For full product information, images and publications, please visit our [website](#).

For laboratory research use only. Not for any clinical, therapeutic, or diagnostic use in humans or animals. Not for animal or human consumption.

Note

Purchasers shall not, and agree not to enable third parties to, analyze, copy, reverse engineer or otherwise attempt to determine the structure or sequence of the product.

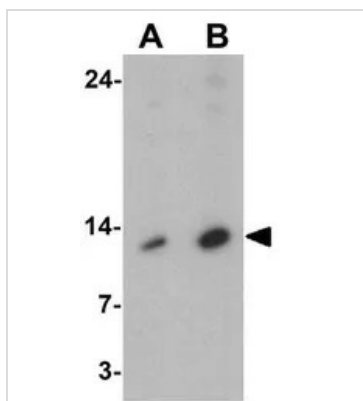
DATA IMAGES



GTX31568 IHC-P Image

IHC-P analysis of human brain tissue using GTX31568 MP1 antibody.

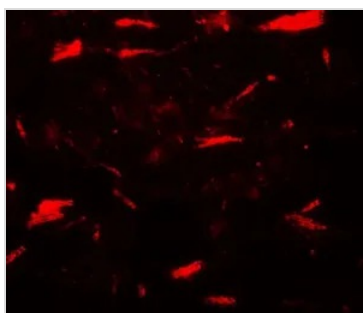
Working concentration : 5 µg/ml



GTX31568 WB Image

WB analysis of human brain tissue lysate using GTX31568 MP1 antibody.

Working concentration : (A) 1 and (B) 2 µg/ml



GTX31568 IHC-P Image

IHC-P analysis of human brain tissue using GTX31568 MP1 antibody.

Working concentration : 20 µg/ml



For full product information, images and publications, please visit our [website](https://www.genetex.com).