

P2X7 antibody

Cat. No. GTX31600

Host	Rabbit
Clonality	Polyclonal
Isotype	IgG
Applications	WB, ICC/IF, ELISA
Reactivity	Human, Mouse

Package
100 µg

Applications

Application Note

*Optimal dilutions/concentrations should be determined by the researcher.

Suggested dilution	Recommended dilution
WB	1 - 2 µg/mL
ICC/IF	5 µg/mL
ELISA	Assay dependent

Not tested in other applications.

Calculated MW 69 kDa. ([Note](#))

Properties

Form	Liquid
Buffer	PBS
Preservative	0.02% Sodium azide
Storage	Store as concentrated solution. Centrifuge briefly prior to opening vial. For short-term storage (1-2 weeks), store at 4°C. For long-term storage, aliquot and store at -20°C or below. Avoid multiple freeze-thaw cycles.
Concentration	1 mg/ml (Please refer to the vial label for the specific concentration.)
Immunogen	P2RX7 antibody was raised against a 17 amino acid peptide near the carboxy terminus of human P2RX7. The immunogen is located within the last 50 amino acids of P2RX7.
Purification	Purified by antigen-affinity chromatography
Conjugation	Unconjugated

Note

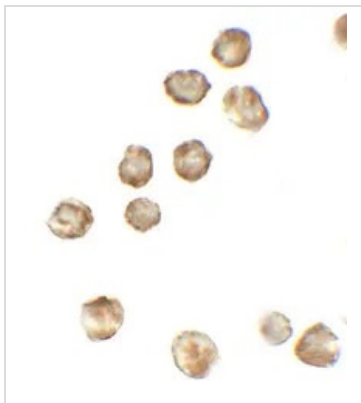
For laboratory research use only. Not for any clinical, therapeutic, or diagnostic use in humans or animals. Not for animal or human consumption.

Purchasers shall not, and agree not to enable third parties to, analyze, copy, reverse engineer or otherwise attempt to determine the structure or sequence of the product.



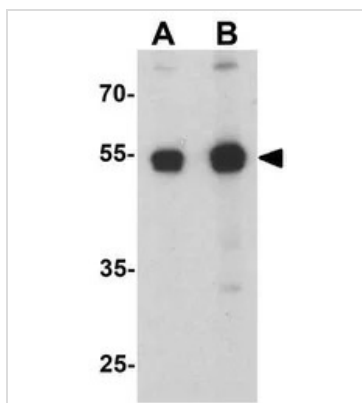
For full product information, images and publications, please visit our [website](#).

DATA IMAGES



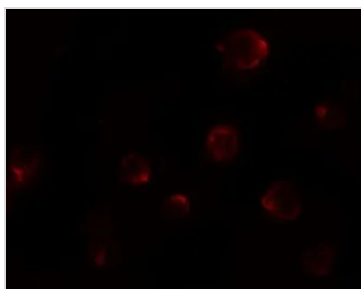
GTX31600 ICC/IF Image

ICC/IF analysis of 3T3 cells using GTX31600 P2X7 antibody.
Working concentration : 5 µg/ml



GTX31600 WB Image

WB analysis of 3T3 cell lysate using GTX31600 P2X7 antibody.
Working concentration : (A) 1 and (B) 2 µg/ml



GTX31600 ICC/IF Image

ICC/IF analysis of 3T3 cells using GTX31600 P2X7 antibody.
Working concentration : 20 µg/ml



For full product information, images and publications, please visit our [website](https://www.genetex.com).