

HES5 antibody

Cat. No. GTX31605

Host	Rabbit
Clonality	Polyclonal
Isotype	IgG
Applications	WB, IHC-P, ELISA
Reactivity	Human, Mouse, Rat

Package
100 µg

Applications

Application Note

*Optimal dilutions/concentrations should be determined by the researcher.

Suggested dilution	Recommended dilution
WB	1 - 2 µg/mL
IHC-P	5 µg/mL
ELISA	Assay dependent

Not tested in other applications.

Calculated MW	18 kDa. (Note)
Product Note	At least two isoforms of HES5 are known to exist; this antibody will detect both isoforms.

Properties

Form	Liquid
Buffer	PBS
Preservative	0.02% Sodium azide
Storage	Store as concentrated solution. Centrifuge briefly prior to opening vial. For short-term storage (1-2 weeks), store at 4°C. For long-term storage, aliquot and store at -20°C or below. Avoid multiple freeze-thaw cycles.
Concentration	1 mg/ml (Please refer to the vial label for the specific concentration.)
Immunogen	HES5 antibody was raised against a 19 amino acid peptide near the amino terminus of human HES5. The immunogen is located within the first 50 amino acids of HES5.
Purification	Purified by antigen-affinity chromatography
Conjugation	Unconjugated



For full product information, images and publications, please visit our [website](#).

For laboratory research use only. Not for any clinical, therapeutic, or diagnostic use in humans or animals. Not for animal or human consumption.

Note

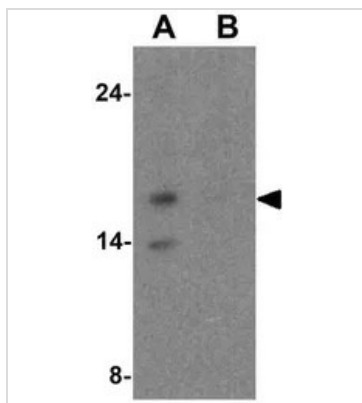
Purchasers shall not, and agree not to enable third parties to, analyze, copy, reverse engineer or otherwise attempt to determine the structure or sequence of the product.

DATA IMAGES

GTX31605 IHC-P Image

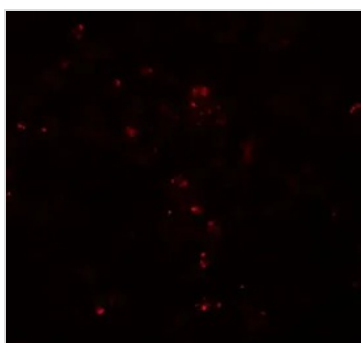
IHC-P analysis of human spleen tissue using GTX31605 HES5 antibody.

Working concentration : 5 µg/ml


GTX31605 WB Image

WB analysis of Raji cell lysate using GTX31605 HES5 antibody.

Working concentration : 1 µg/ml


GTX31605 IHC-P Image

IHC-P analysis of human spleen tissue using GTX31605 HES5 antibody.

Working concentration : 20 µg/ml



For full product information, images and publications, please visit our [website](#).