

Jagged 1 antibody

Cat. No. GTX31607

| | |
|---------------------|-------------------|
| Host | Rabbit |
| Clonality | Polyclonal |
| Isotype | IgG |
| Applications | WB, IHC-P, ELISA |
| Reactivity | Human, Mouse, Rat |

References (2)

Package

100 µg

Applications

Application Note

*Optimal dilutions/concentrations should be determined by the researcher.

| Suggested dilution | Recommended dilution |
|--------------------|----------------------|
| WB | 1 - 2 µg/mL |
| IHC-P | 5 µg/mL |
| ELISA | Assay dependent |

Not tested in other applications.

Calculated MW 134 kDa. ([Note](#))**Product Note** At least two isoforms of JAG1 are known to exist; this antibody will detect both isoforms.

Properties

| | |
|----------------------|--|
| Form | Liquid |
| Buffer | PBS |
| Preservative | 0.02% Sodium azide |
| Storage | Store as concentrated solution. Centrifuge briefly prior to opening vial. For short-term storage (1-2 weeks), store at 4°C. For long-term storage, aliquot and store at -20°C or below. Avoid multiple freeze-thaw cycles. |
| Concentration | 1 mg/ml (Please refer to the vial label for the specific concentration.) |
| Immunogen | JAG1 antibody was raised against a 19 amino acid peptide near the carboxy terminus of human JAG1. The immunogen is located within the last 50 amino acids of JAG1. |
| Purification | Purified by antigen-affinity chromatography |
| Conjugation | Unconjugated |



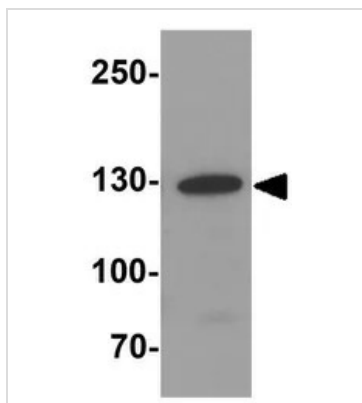
For full product information, images and publications, please visit our [website](#).

For laboratory research use only. Not for any clinical, therapeutic, or diagnostic use in humans or animals. Not for animal or human consumption.

Note

Purchasers shall not, and agree not to enable third parties to, analyze, copy, reverse engineer or otherwise attempt to determine the structure or sequence of the product.

DATA IMAGES

**GTX31607 WB Image**

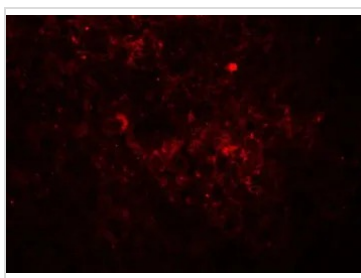
WB analysis of HeLa cell lysate using GTX31607 Jagged 1 antibody.

Working concentration : 1 µg/ml

**GTX31607 IHC-P Image**

IHC-P analysis of human spleen tissue using GTX31607 Jagged 1 antibody.

Working concentration : 5 µg/ml

**GTX31607 IHC-P Image**

IHC-P analysis of human spleen tissue using GTX31607 Jagged 1 antibody.

Working concentration : 20 µg/ml



For full product information, images and publications, please visit our [website](#).