

SOX4 antibody

Cat. No. GTX31613

Host	Rabbit
Clonality	Polyclonal
Isotype	IgG
Applications	WB, IHC-P, ELISA
Reactivity	Human, Mouse, Rat

Package
100 µg

Applications

Application Note

*Optimal dilutions/concentrations should be determined by the researcher.

Suggested dilution	Recommended dilution
WB	1 - 2 µg/mL
IHC-P	5 µg/mL
ELISA	Assay dependent

Not tested in other applications.

Calculated MW 47 kDa. ([Note](#))

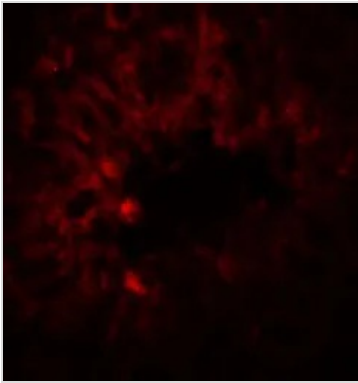
Properties

Form	Liquid
Buffer	PBS
Preservative	0.02% Sodium azide
Storage	Store as concentrated solution. Centrifuge briefly prior to opening vial. For short-term storage (1-2 weeks), store at 4°C. For long-term storage, aliquot and store at -20°C or below. Avoid multiple freeze-thaw cycles.
Concentration	1 mg/ml (Please refer to the vial label for the specific concentration.)
Immunogen	SOX4 antibody was raised against a 16 amino acid peptide near the amino terminus of human SOX4. The immunogen is located within the first 50 amino acids of SOX4.
Purification	Purified by antigen-affinity chromatography
Conjugation	Unconjugated
Note	For laboratory research use only. Not for any clinical, therapeutic, or diagnostic use in humans or animals. Not for animal or human consumption. Purchasers shall not, and agree not to enable third parties to, analyze, copy, reverse engineer or otherwise attempt to determine the structure or sequence of the product.

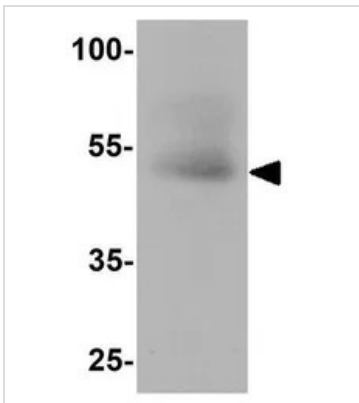


For full product information, images and publications, please visit our [website](#).

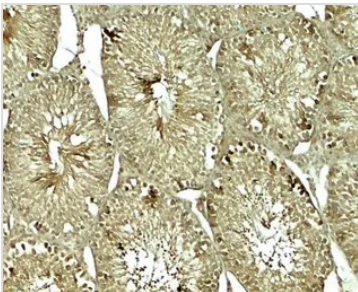
DATA IMAGES

**GTX31613 IHC-P Image**

IHC-P analysis of rat testis tissue using GTX31613 SOX4 antibody.
Working concentration : 20 µg/ml

**GTX31613 WB Image**

WB analysis of human testis tissue lysate using GTX31613 SOX4 antibody.
Working concentration : 1 µg/ml

**GTX31613 IHC-P Image**

IHC-P analysis of rat testis tissue using GTX31613 SOX4 antibody.
Working concentration : 5 µg/ml



For full product information, images and publications, please visit our [website](#).