

OATP2 antibody

Cat. No. GTX31621

Host	Rabbit
Clonality	Polyclonal
Isotype	IgG
Applications	WB, ICC/IF, IHC-P, ELISA
Reactivity	Human

References (1)

Package

100 µg

Applications

Application Note

*Optimal dilutions/concentrations should be determined by the researcher.

Suggested dilution	Recommended dilution
WB	1 - 2 µg/mL
ICC/IF	Assay dependent
IHC-P	20 µg/mL
ELISA	Assay dependent

Not tested in other applications.

Calculated MW 76 kDa. ([Note](#))

Product Note This antibody is human specific. At least four isoforms are known to exist. This antibody is predicted to not cross-react with other SLCO1B proteins.

Properties

Form	Liquid
Buffer	PBS
Preservative	0.02% Sodium azide
Storage	Store as concentrated solution. Centrifuge briefly prior to opening vial. For short-term storage (1-2 weeks), store at 4°C. For long-term storage, aliquot and store at -20°C or below. Avoid multiple freeze-thaw cycles.
Concentration	1 mg/ml (Please refer to the vial label for the specific concentration.)
Immunogen	OATP2 antibody was raised against a 14 amino acid peptide near the carboxy terminus of human OATP2. The immunogen is located within the last 50 amino acids of OATP2.
Purification	Purified by antigen-affinity chromatography
Conjugation	Unconjugated



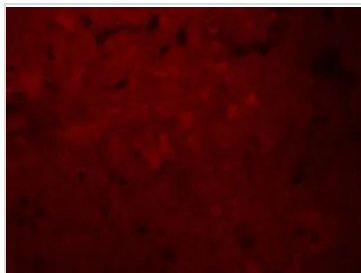
For full product information, images and publications, please visit our [website](#).

For laboratory research use only. Not for any clinical, therapeutic, or diagnostic use in humans or animals. Not for animal or human consumption.

Note

Purchasers shall not, and agree not to enable third parties to, analyze, copy, reverse engineer or otherwise attempt to determine the structure or sequence of the product.

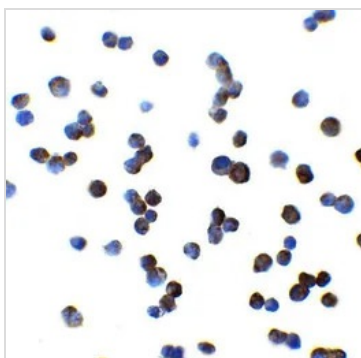
DATA IMAGES



GTX31621 IHC-P Image

IHC-P analysis of human liver tissue using GTX31621 OATP2 antibody.

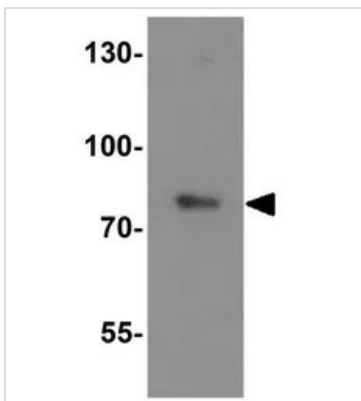
Working concentration : 20 µg/ml



GTX31621 ICC/IF Image

ICC/IF analysis of HepG2 cells using GTX31621 OATP2 antibody.

Working concentration : 2.5 µg/ml



GTX31621 WB Image

WB analysis of human liver tissue lysate using GTX31621 OATP2 antibody.

Working concentration : 1 µg/ml



For full product information, images and publications, please visit our [website](#).