

ADAM17 antibody

Cat. No. GTX31632

Host	Rabbit
Clonality	Polyclonal
Isotype	IgG
Applications	WB, ICC/IF, ELISA
Reactivity	Human, Rat

Package
100 µg

Applications

Application Note

*Optimal dilutions/concentrations should be determined by the researcher.

Suggested dilution	Recommended dilution
WB	0.5 µg/mL
ICC/IF	10 µg/mL
ELISA	Assay dependent

Not tested in other applications.

Calculated MW	93 kDa. (Note)
Product Note	80 to 130 kDa bands can be detected, which may represent mature protein, precursor, and glycosylated form.

Properties

Form	Liquid
Buffer	PBS
Preservative	0.02% Sodium azide
Storage	Store as concentrated solution. Centrifuge briefly prior to opening vial. For short-term storage (1-2 weeks), store at 4°C. For long-term storage, aliquot and store at -20°C or below. Avoid multiple freeze-thaw cycles.
Concentration	1 mg/ml (Please refer to the vial label for the specific concentration.)
Immunogen	ADAM17 antibody was raised against a peptide corresponding to 17 amino acids near the carboxy terminus of human ADAM17. The immunogen is located within the last 50 amino acids of ADAM17.
Purification	Purified by antigen-affinity chromatography
Conjugation	Unconjugated



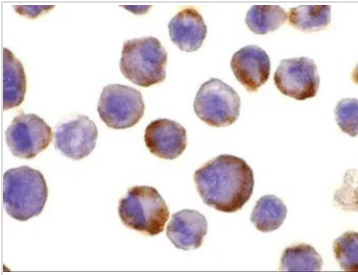
For full product information, images and publications, please visit our [website](#).

Date 2026 / 01 / 13 Page 1 of 2

For laboratory research use only. Not for any clinical, therapeutic, or diagnostic use in humans or animals. Not for animal or human consumption.

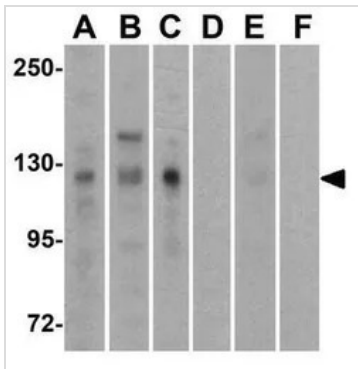
Note

Purchasers shall not, and agree not to enable third parties to, analyze, copy, reverse engineer or otherwise attempt to determine the structure or sequence of the product.

DATA IMAGES

GTX31632 ICC/IF Image

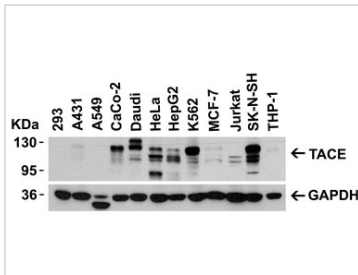
ICC/IF analysis of HeLa cells using GTX31632 ADAM17 antibody.

Working concentration : 10 µg/ml


GTX31632 WB Image

WB analysis of HeLa (A, D), Jurkat (B, E) and Raji (C, F) cell lysate in (A-C) the absence or (D-F) the presence of blocking peptide using GTX31632 ADAM17 antibody.

Working concentration : 0.5 µg/ml


GTX31632 WB Image

WB analysis of various sample lysates using GTX31632 ADAM17 antibody.

Loading : 15µg of lysates per lane

Dilution : 0.5 µg/ml



For full product information, images and publications, please visit our [website](http://www.genetex.com).