

GFR alpha 3 antibody

Cat. No. GTX31634

Host	Rabbit
Clonality	Polyclonal
Isotype	IgG
Applications	WB, IHC-P, ELISA
Reactivity	Human, Mouse, Rat

Package
100 µg

Applications

Application Note

*Optimal dilutions/concentrations should be determined by the researcher.

Suggested dilution	Recommended dilution
WB	0.5 µg/mL
IHC-P	5 µg/mL
ELISA	Assay dependent

Not tested in other applications.

Calculated MW 44 kDa. ([Note](#))

Properties

Form	Liquid
Buffer	PBS
Preservative	0.02% Sodium azide
Storage	Store as concentrated solution. Centrifuge briefly prior to opening vial. For short-term storage (1-2 weeks), store at 4°C. For long-term storage, aliquot and store at -20°C or below. Avoid multiple freeze-thaw cycles.
Concentration	1 mg/ml (Please refer to the vial label for the specific concentration.)
Immunogen	GFR alpha 3 antibody was raised against a 14 amino acid peptide near the center of murine GFR alpha 3. The immunogen is located within the last 50 amino acids of GFR alpha 3.
Purification	Purified by DEAE chromatography
Conjugation	Unconjugated

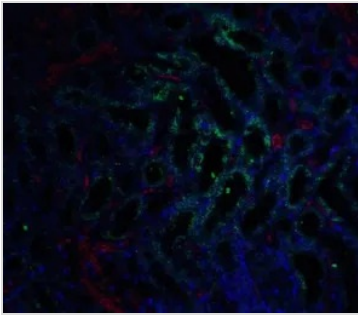
Note

For laboratory research use only. Not for any clinical, therapeutic, or diagnostic use in humans or animals. Not for animal or human consumption.

Purchasers shall not, and agree not to enable third parties to, analyze, copy, reverse engineer or otherwise attempt to determine the structure or sequence of the product.



For full product information, images and publications, please visit our [website](#).

DATA IMAGES

GTX31634 IHC-P Image

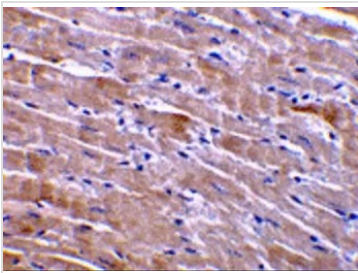
IHC-P analysis of mouse kidney tissue using GTX31634 GFR alpha 3 antibody.

Working concentration : 5 µg/ml

Green : Primary antibody

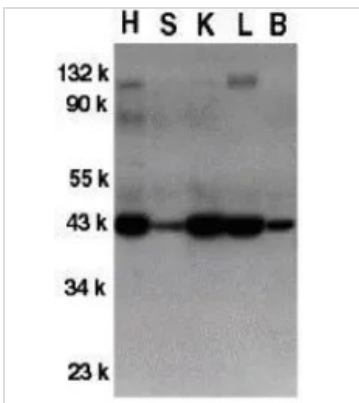
Blue : DAPI

Red : Actin


GTX31634 IHC-P Image

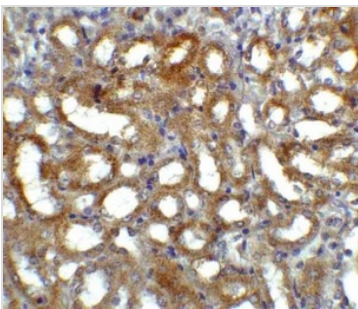
IHC-P analysis of mouse heart tissue using GTX31634 GFR alpha 3 antibody.

Working concentration : 10 µg/ml


GTX31634 WB Image

WB analysis of crude cell membrane fractions of mouse heart (H), spleen (S), kidney (K), liver (L), and brain (B) using GTX31634 GFR alpha 3 antibody.

Working concentration : 2 µg/ml


GTX31634 IHC-P Image

IHC-P analysis of mouse kidney tissue using GTX31634 GFR alpha 3 antibody.

Working concentration : 5 µg/ml



For full product information, images and publications, please visit our [website](https://www.genetex.com).