

## ICAD antibody

Cat. No. GTX31635

Host	Rabbit
Clonality	Polyclonal
Isotype	IgG
Applications	WB, ICC/IF, ELISA
Reactivity	Human

Package  
100 µg

## Applications

## Application Note

\*Optimal dilutions/concentrations should be determined by the researcher.

Suggested dilution	Recommended dilution
WB	0.5 - 1 µg/mL
ICC/IF	5 µg/mL
ELISA	Assay dependent

Not tested in other applications.

Calculated MW 37 kDa. ( [Note](#) )

## Properties

Form	Liquid
Buffer	PBS
Preservative	0.02% Sodium azide
Storage	Store as concentrated solution. Centrifuge briefly prior to opening vial. For short-term storage (1-2 weeks), store at 4°C. For long-term storage, aliquot and store at -20°C or below. Avoid multiple freeze-thaw cycles.
Concentration	Batch dependent (Please refer to the vial label for the specific concentration.)
Immunogen	ICAD antibody was raised against a 19 amino acid peptide near the carboxy terminus of human ICAD. The immunogen is located within the last 50 amino acids of ICAD.
Purification	Purified by DEAE chromatography
Conjugation	Unconjugated

## Note

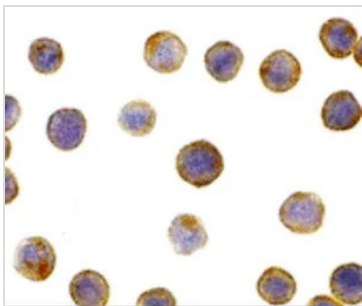
For laboratory research use only. Not for any clinical, therapeutic, or diagnostic use in humans or animals. Not for animal or human consumption.

Purchasers shall not, and agree not to enable third parties to, analyze, copy, reverse engineer or otherwise attempt to determine the structure or sequence of the product.



For full product information, images and publications, please visit our [website](#).

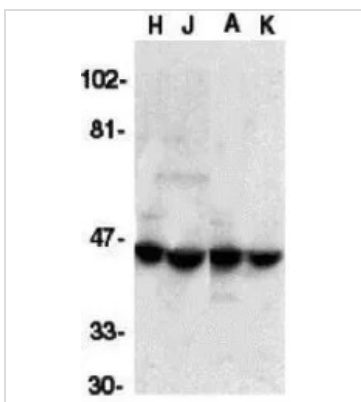
## DATA IMAGES



### GTX31635 ICC/IF Image

ICC/IF analysis of HeLa cells using GTX31635 ICAD antibody.

Working concentration : 5 µg/ml



### GTX31635 WB Image

WB analysis of HeLa (H), Jurkat (J), A431 (A), and K562 (K) whole cell lysate using GTX31635 ICAD antibody.

Working concentration : 1:1000



For full product information, images and publications, please visit our [website](#).