

## IKK beta antibody

Cat. No. GTX31645

Host	Rabbit
Clonality	Polyclonal
Isotype	IgG
Applications	WB, ICC/IF, ELISA
Reactivity	Human

Package  
100 µg

## Applications

## Application Note

\*Optimal dilutions/concentrations should be determined by the researcher.

Suggested dilution	Recommended dilution
WB	0.5 µg/mL
ICC/IF	10 µg/mL
ELISA	Assay dependent

Not tested in other applications.

Calculated MW	87 kDa. ( <a href="#">Note</a> )
Product Note	This polyclonal antibody has no cross response to IKKa or IKKy.

## Properties

Form	Liquid
Buffer	PBS
Preservative	0.02% Sodium azide
Storage	Store as concentrated solution. Centrifuge briefly prior to opening vial. For short-term storage (1-2 weeks), store at 4°C. For long-term storage, aliquot and store at -20°C or below. Avoid multiple freeze-thaw cycles.
Concentration	Batch dependent (Please refer to the vial label for the specific concentration.)
Immunogen	IKK beta antibody was raised against a peptide corresponding to amino acids near the carboxy terminus of human IKK beta (Genbank accession NoO14920), which differs from corresponding murine sequence by one amino acid. The immunogen is located within amino acids 650 - 700 of IKK beta.
Purification	Purified by antigen-affinity chromatography
Conjugation	Unconjugated



For full product information, images and publications, please visit our [website](#).

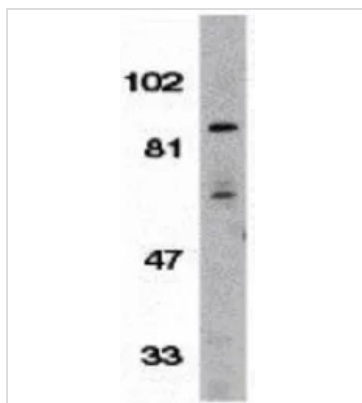
Date 2025 / 12 / 16 Page 1 of 2

For laboratory research use only. Not for any clinical, therapeutic, or diagnostic use in humans or animals. Not for animal or human consumption.

## Note

Purchasers shall not, and agree not to enable third parties to, analyze, copy, reverse engineer or otherwise attempt to determine the structure or sequence of the product.

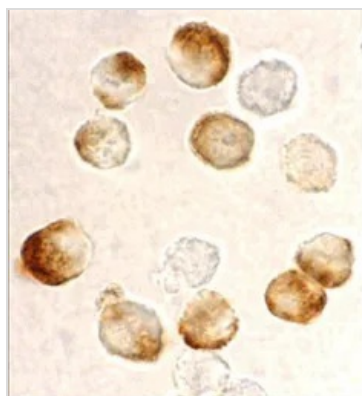
## DATA IMAGES



### GTX31645 WB Image

WB analysis of Jurkat cell lysate using GTX31645 IKK beta antibody.

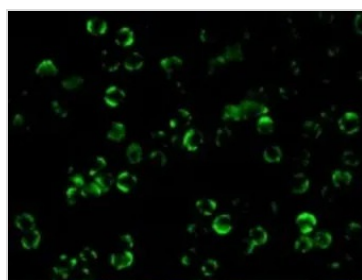
Working concentration : 1:500



### GTX31645 ICC/IF Image

ICC/IF analysis of HeLa cells using GTX31645 IKK beta antibody.

Working concentration : 10 µg/ml



### GTX31645 ICC/IF Image

ICC/IF analysis of HeLa cells using GTX31645 IKK beta antibody.

Working concentration : 10 µg/ml



For full product information, images and publications, please visit our [website](https://www.genetex.com).