

Survivin antibody

Cat. No. GTX31652

Host	Rabbit
Clonality	Polyclonal
Isotype	IgG
Applications	WB, ICC/IF, ELISA
Reactivity	Human

Package
100 µg

Applications

Application Note

*Optimal dilutions/concentrations should be determined by the researcher.

Suggested dilution	Recommended dilution
WB	1 µg/mL
ICC/IF	10 µg/mL
ELISA	Assay dependent

Not tested in other applications.

Calculated MW 16 kDa. ([Note](#))

Properties

Form	Liquid
Buffer	PBS
Preservative	0.02% Sodium azide
Storage	Store as concentrated solution. Centrifuge briefly prior to opening vial. For short-term storage (1-2 weeks), store at 4°C. For long-term storage, aliquot and store at -20°C or below. Avoid multiple freeze-thaw cycles.
Concentration	Batch dependent (Please refer to the vial label for the specific concentration.)
Immunogen	Survivin antibody was raised against a peptide corresponding to amino acids near the carboxy terminus of human survivin. The immunogen is located within the last 50 amino acids of Survivin.
Purification	Purified by antigen-affinity chromatography
Conjugation	Unconjugated

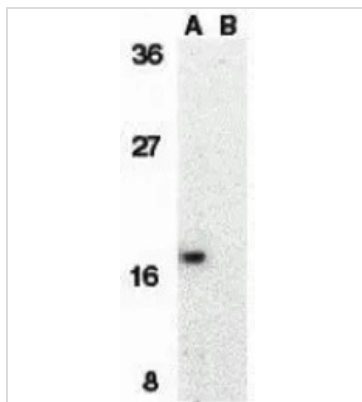
Note

For laboratory research use only. Not for any clinical, therapeutic, or diagnostic use in humans or animals. Not for animal or human consumption.

Purchasers shall not, and agree not to enable third parties to, analyze, copy, reverse engineer or otherwise attempt to determine the structure or sequence of the product.

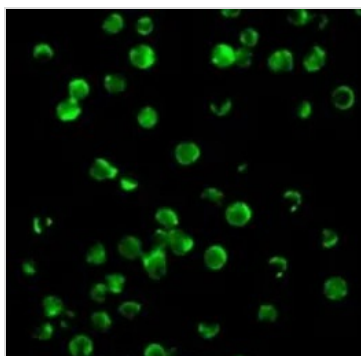


For full product information, images and publications, please visit our [website](#).

DATA IMAGES

GTX31652 WB Image

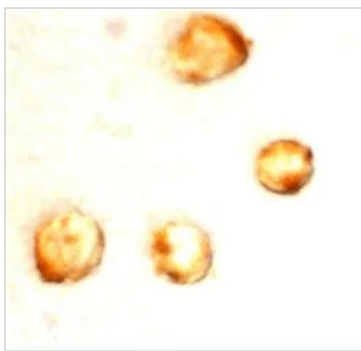
WB analysis of MOLT4 cell lysate in the absence (A) or presence (B) of blocking peptide using GTX31652 Survivin antibody.

Working concentration : 1 µg/ml


GTX31652 ICC/IF Image

ICC/IF analysis of MOLT4 cells using GTX31652 Survivin antibody.

Working concentration : 10 µg/ml


GTX31652 ICC/IF Image

ICC/IF analysis of MOLT4 cells using GTX31652 Survivin antibody.

Working concentration : 10 µg/ml



For full product information, images and publications, please visit our [website](#).