

DC-SIGN antibody

Cat. No. GTX31657

Host	Rabbit
Clonality	Polyclonal
Isotype	IgG
Applications	WB, IHC-P, ELISA
Reactivity	Human

Package
100 µg

Applications

Application Note

*Optimal dilutions/concentrations should be determined by the researcher.

Suggested dilution	Recommended dilution
WB	2 µg/mL
IHC-P	10 µg/mL
ELISA	Assay dependent

Not tested in other applications.

Calculated MW 46 kDa. ([Note](#))

Properties

Form	Liquid
Buffer	PBS
Preservative	0.02% Sodium azide
Storage	Store as concentrated solution. Centrifuge briefly prior to opening vial. For short-term storage (1-2 weeks), store at 4°C. For long-term storage, aliquot and store at -20°C or below. Avoid multiple freeze-thaw cycles.
Concentration	1 mg/ml (Please refer to the vial label for the specific concentration.)
Immunogen	DC-SIGN antibody was raised against a synthetic peptide corresponding to 17 amino acids near the center of human DC-SIGN. The immunogen is located within amino acids 250 - 300 of DC-SIGN.
Purification	Purified by antigen-affinity chromatography
Conjugation	Unconjugated

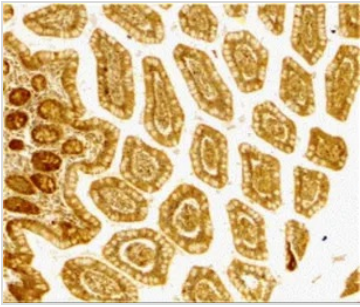
Note For laboratory research use only. Not for any clinical, therapeutic, or diagnostic use in humans or animals. Not for animal or human consumption.

Purchasers shall not, and agree not to enable third parties to, analyze, copy, reverse engineer or otherwise attempt to determine the structure or sequence of the product.

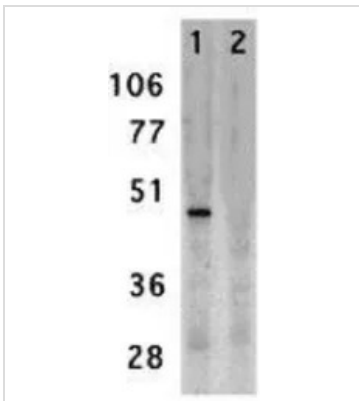


For full product information, images and publications, please visit our [website](#).

DATA IMAGES

**GTX31657 IHC-P Image**

IHC-P analysis of human small intestine tissue using GTX31657 DC-SIGN antibody.
Working concentration : 10 µg/ml

**GTX31657 WB Image**

WB analysis of human placenta tissue lysate in the absence (lane 1) and presence (lane 2) of blocking peptide using GTX31657 DC-SIGN antibody.
Working concentration : 2 µg/ml



For full product information, images and publications, please visit our [website](#).