

## NAK / TBK1 antibody

Cat. No. GTX31658

Host	Rabbit
Clonality	Polyclonal
Isotype	IgG
Applications	WB, ICC/IF, ELISA
Reactivity	Human, Mouse

Package  
100 µg

## Applications

## Application Note

\*Optimal dilutions/concentrations should be determined by the researcher.

Suggested dilution	Recommended dilution
WB	Assay dependent
ICC/IF	10 µg/mL
ELISA	Assay dependent

Not tested in other applications.

Calculated MW	84 kDa. ( <a href="#">Note</a> )
Product Note	No cross response to IKKa, IKKb, IKKy, or IKKe.

## Properties

Form	Liquid
Buffer	PBS
Preservative	0.02% Sodium azide
Storage	Store as concentrated solution. Centrifuge briefly prior to opening vial. For short-term storage (1-2 weeks), store at 4°C. For long-term storage, aliquot and store at -20°C or below. Avoid multiple freeze-thaw cycles.
Concentration	Batch dependent (Please refer to the vial label for the specific concentration.)
Immunogen	NAK antibody was raised against a synthetic peptide corresponding to 17 amino acids form near the carboxy terminus of human NAK/TBK1. The immunogen is located within the last 50 amino acids of NAK.
Purification	Purified by antigen-affinity chromatography
Conjugation	Unconjugated



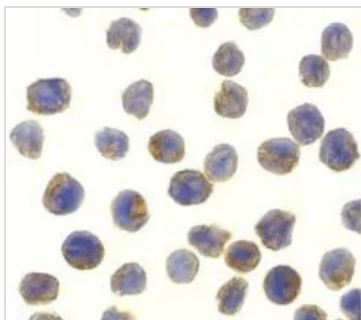
For full product information, images and publications, please visit our [website](#).

For laboratory research use only. Not for any clinical, therapeutic, or diagnostic use in humans or animals. Not for animal or human consumption.

## Note

Purchasers shall not, and agree not to enable third parties to, analyze, copy, reverse engineer or otherwise attempt to determine the structure or sequence of the product.

## DATA IMAGES



### GTX31658 ICC/IF Image

ICC/IF analysis of MOLT4 cells using GTX31658 NAK / TBK1 antibody.

Working concentration : 10 µg/ml



For full product information, images and publications, please visit our [website](#).