

## BCMA antibody

Cat. No. GTX31660

<b>Host</b>	Rabbit
<b>Clonality</b>	Polyclonal
<b>Isotype</b>	IgG
<b>Applications</b>	WB, IHC-P, ELISA
<b>Reactivity</b>	Human

Package  
100 µg

## Applications

## Application Note

\*Optimal dilutions/concentrations should be determined by the researcher.

Suggested dilution	Recommended dilution
WB	5 µg/mL
IHC-P	5 µg/mL
ELISA	Assay dependent

Not tested in other applications.

**Calculated MW** 20 kDa. ([Note](#))

## Properties

<b>Form</b>	Liquid
<b>Buffer</b>	PBS
<b>Preservative</b>	0.02% Sodium azide
<b>Storage</b>	Store as concentrated solution. Centrifuge briefly prior to opening vial. For short-term storage (1-2 weeks), store at 4°C. For long-term storage, aliquot and store at -20°C or below. Avoid multiple freeze-thaw cycles.
<b>Concentration</b>	1 mg/ml (Please refer to the vial label for the specific concentration.)
<b>Immunogen</b>	BCMA antibody was raised against a 16 amino acid synthetic peptide mapping at the carboxy terminus of human BCMA. The immunogen is located within the last 50 amino acids of BCMA.
<b>Purification</b>	Purified by antigen-affinity chromatography
<b>Conjugation</b>	Unconjugated

## Note

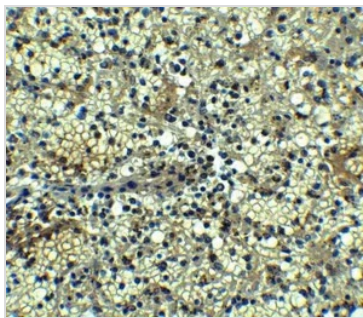
For laboratory research use only. Not for any clinical, therapeutic, or diagnostic use in humans or animals. Not for animal or human consumption.

Purchasers shall not, and agree not to enable third parties to, analyze, copy, reverse engineer or otherwise attempt to determine the structure or sequence of the product.

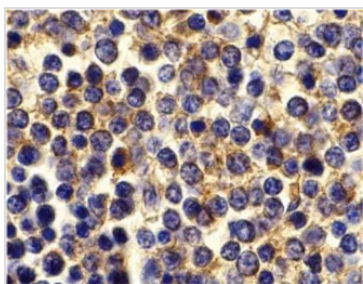


For full product information, images and publications, please visit our [website](#).

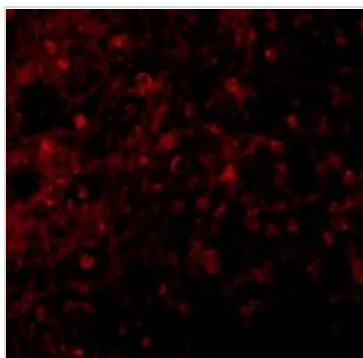
## DATA IMAGES

**GTX31660 IHC-P Image**

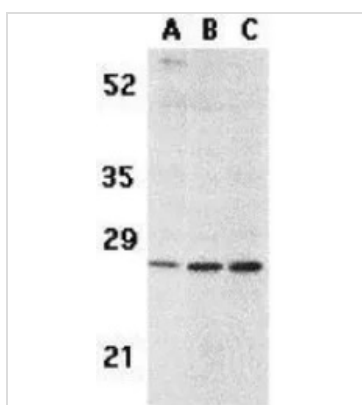
IHC-P analysis of human spleen tissue using GTX31660 BCMA antibody.  
Working concentration : 5 µg/ml

**GTX31660 IHC-P Image**

IHC-P analysis of human spleen tissue using GTX31660 BCMA antibody.  
Working concentration : 10 µg/ml

**GTX31660 IHC-P Image**

IHC-P analysis of human spleen tissue using GTX31660 BCMA antibody.  
Working concentration : 10 µg/ml

**GTX31660 WB Image**

WB analysis of (A) human spleen tissue lysate, (B) K562, and (C) U937 cell lysates using GTX31660 BCMA antibody.  
Working concentration : 5 µg/ml



For full product information, images and publications, please visit our [website](#).