

NOD2 antibody

Cat. No. GTX31664

Host	Rabbit
Clonality	Polyclonal
Isotype	IgG
Applications	WB, ICC/IF, ELISA
Reactivity	Human

Package
100 µg

Applications

Application Note

*Optimal dilutions/concentrations should be determined by the researcher.

Suggested dilution	Recommended dilution
WB	1 - 2 µg/mL
ICC/IF	Assay dependent
ELISA	Assay dependent

Not tested in other applications.

Calculated MW 115 kDa. ([Note](#))

Product Note At least four isoforms of NOD2 are known to exist; this antibody will only detect the longest isoform. NOD2 has no cross-reaction with NOD1.

Properties

Form	Liquid
Buffer	PBS
Preservative	0.02% Sodium azide
Storage	Store as concentrated solution. Centrifuge briefly prior to opening vial. For short-term storage (1-2 weeks), store at 4°C. For long-term storage, aliquot and store at -20°C or below. Avoid multiple freeze-thaw cycles.
Concentration	1 mg/ml (Please refer to the vial label for the specific concentration.)
Immunogen	NOD2 antibody was raised against a synthetic peptide corresponding to 16 amino acids at the amino terminus of human NOD2. The immunogen is located within the first 50 amino acids of NOD2.
Purification	Purified by affinity chromatography
Conjugation	Unconjugated



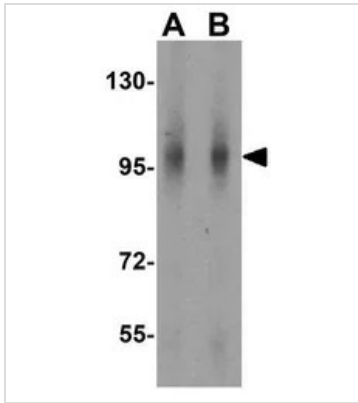
For full product information, images and publications, please visit our [website](#).

For laboratory research use only. Not for any clinical, therapeutic, or diagnostic use in humans or animals. Not for animal or human consumption.

Note

Purchasers shall not, and agree not to enable third parties to, analyze, copy, reverse engineer or otherwise attempt to determine the structure or sequence of the product.

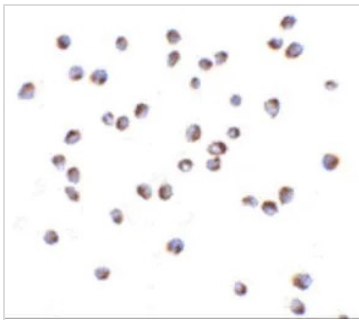
DATA IMAGES



GTX31664 WB Image

WB analysis of human lymph node tissue lysate using GTX31664 NOD2 antibody.

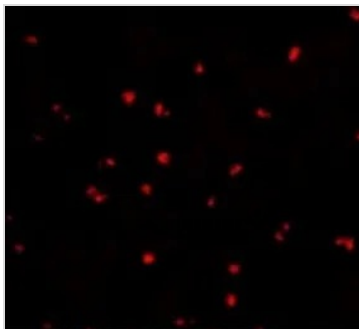
Working concentration : (A) 1 and (B) 2 µg/ml



GTX31664 ICC/IF Image

ICC/IF analysis of Jurkat cells using GTX31664 NOD2 antibody.

Working concentration : 5 µg/ml



GTX31664 ICC/IF Image

ICC/IF analysis of Jurkat cells using GTX31664 NOD2 antibody.

Working concentration : 20 µg/ml



For full product information, images and publications, please visit our [website](#).