

PAK4 antibody

Cat. No. GTX31673

| | |
|---------------------|------------------|
| Host | Rabbit |
| Clonality | Polyclonal |
| Isotype | IgG |
| Applications | WB, IHC-P, ELISA |
| Reactivity | Human |

Package
100 µg

Applications

Application Note

*Optimal dilutions/concentrations should be determined by the researcher.

| Suggested dilution | Recommended dilution |
|--------------------|----------------------|
| WB | 1 - 2 µg/mL |
| IHC-P | 10 µg/mL |
| ELISA | Assay dependent |

Not tested in other applications.

| | |
|----------------------|---|
| Calculated MW | 64 kDa. (Note) |
| Product Note | PAK4 antibody is predicted to not cross-react with other PAK family proteins. |

Properties

| | |
|----------------------|--|
| Form | Liquid |
| Buffer | PBS |
| Preservative | 0.02% Sodium azide |
| Storage | Store as concentrated solution. Centrifuge briefly prior to opening vial. For short-term storage (1-2 weeks), store at 4°C. For long-term storage, aliquot and store at -20°C or below. Avoid multiple freeze-thaw cycles. |
| Concentration | 1 mg/ml (Please refer to the vial label for the specific concentration.) |
| Immunogen | PAK4 antibody was raised against a 13 amino acid synthetic peptide from near the center of human PAK4. The immunogen is located within amino acids 210 - 260 of PAK4. |
| Purification | Purified by antigen-affinity chromatography |
| Conjugation | Unconjugated |

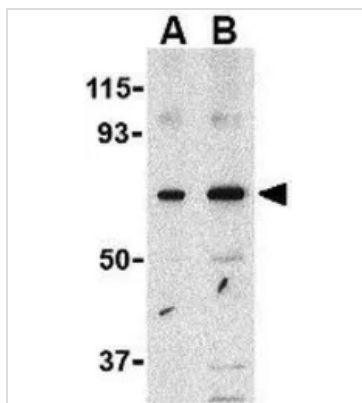


For full product information, images and publications, please visit our [website](#).

For laboratory research use only. Not for any clinical, therapeutic, or diagnostic use in humans or animals. Not for animal or human consumption.

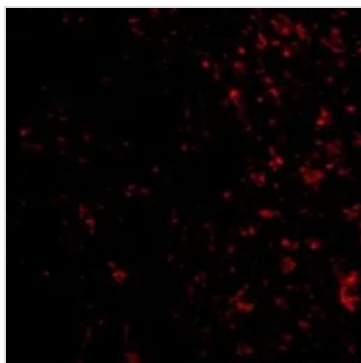
Note

Purchasers shall not, and agree not to enable third parties to, analyze, copy, reverse engineer or otherwise attempt to determine the structure or sequence of the product.

DATA IMAGES

GTX31673 WB Image

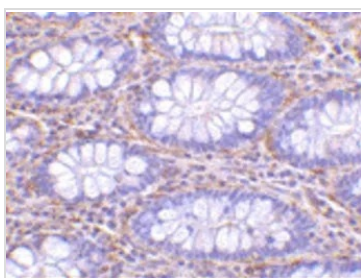
WB analysis of SW480 cell lysate using GTX31673 PAK4 antibody.

Working concentration : (A) 1 and (B) 2 μ g/ml


GTX31673 IHC-P Image

IHC-P analysis of human colon tissue using GTX31673 PAK4 antibody.

Working concentration : 20 μ g/ml


GTX31673 IHC-P Image

IHC-P analysis of human colon tissue using GTX31673 PAK4 antibody.

Working concentration : 10 μ g/ml



For full product information, images and publications, please visit our [website](https://www.genetex.com).