

ALS2CR2 antibody

Cat. No. GTX31679

Host	Rabbit
Clonality	Polyclonal
Isotype	IgG
Applications	WB, IHC-P, ELISA
Reactivity	Human

Package
100 µg

Applications

Application Note

*Optimal dilutions/concentrations should be determined by the researcher.

Suggested dilution	Recommended dilution
WB	0.5 - 2 µg/mL
IHC-P	5 µg/mL
ELISA	Assay dependent

Not tested in other applications.

Calculated MW 47 kDa. ([Note](#))

Properties

Form	Liquid
Buffer	PBS
Preservative	0.02% Sodium azide
Storage	Store as concentrated solution. Centrifuge briefly prior to opening vial. For short-term storage (1-2 weeks), store at 4°C. For long-term storage, aliquot and store at -20°C or below. Avoid multiple freeze-thaw cycles.
Concentration	1 mg/ml (Please refer to the vial label for the specific concentration.)
Immunogen	ALS2CR2 antibody was raised against a synthetic peptide corresponding to amino acids at the C-terminus of human ALS2CR2. The immunogen is located within the last 50 amino acids of ALS2CR2.
Purification	Purified by antigen-affinity chromatography
Conjugation	Unconjugated

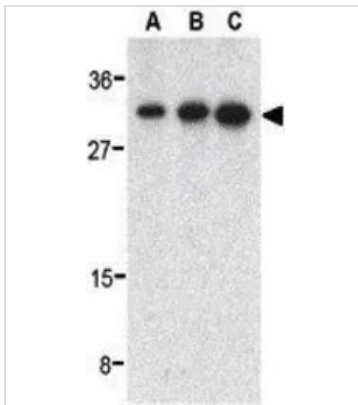
Note For laboratory research use only. Not for any clinical, therapeutic, or diagnostic use in humans or animals. Not for animal or human consumption.

Purchasers shall not, and agree not to enable third parties to, analyze, copy, reverse engineer or otherwise attempt to determine the structure or sequence of the product.

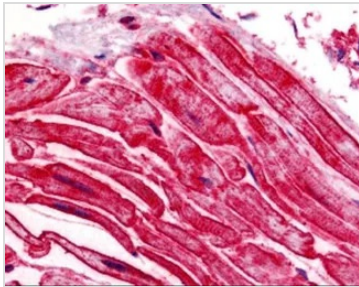


For full product information, images and publications, please visit our [website](#).

DATA IMAGES

**GTX31679 WB Image**

WB analysis of human heart tissue lysate using GTX31679 ALS2CR2 antibody.
Working concentration : (A) 0.5, (B) 1, and (C) 2 $\mu\text{g/ml}$

**GTX31679 IHC-P Image**

IHC-P analysis of human heart tissue using GTX31679 ALS2CR2 antibody.
Working concentration : 5 $\mu\text{g/ml}$



For full product information, images and publications, please visit our [website](#).