

## Bcl-2 antibody

Cat. No. GTX31686

Host	Rabbit
Clonality	Polyclonal
Isotype	IgG
Application	WB, IHC-P, ELISA
Reactivity	Human, Mouse

Package  
100 µg

## APPLICATION

## Application Note

\*Optimal dilutions/concentrations should be determined by the researcher.

Suggested dilution	Recommended dilution
WB	1-2µg/mL
IHC-P	2 µg/mL
ELISA	Assay dependent

Not tested in other applications.

Calculated MW 26 kDa. ( [Note](#) )

## PROPERTIES

Form	Liquid
Buffer	PBS
Preservative	0.02% Sodium azide
Storage	Store as concentrated solution. Centrifuge briefly prior to opening vial. For short-term storage (1-2 weeks), store at 4°C. For long-term storage, aliquot and store at -20°C or below. Avoid multiple freeze-thaw cycles.
Concentration	1 mg/ml (Please refer to the vial label for the specific concentration.)
Immunogen	Bcl-2 antibody was raised against a peptide corresponding to 15 amino acids near the N terminus of human Bcl-2. The immunogen is located within the first 50 amino acids of Bcl-2.
Purification	Purified by antigen-affinity chromatography
Conjugation	Unconjugated

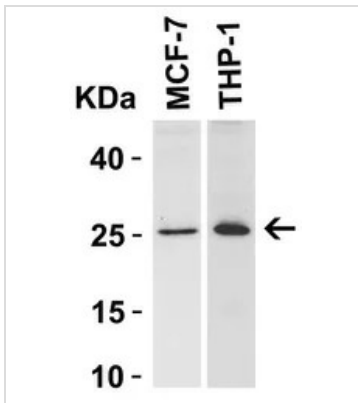
## Note

For laboratory research use only. Not for any clinical, therapeutic, or diagnostic use in humans or animals. Not for animal or human consumption.

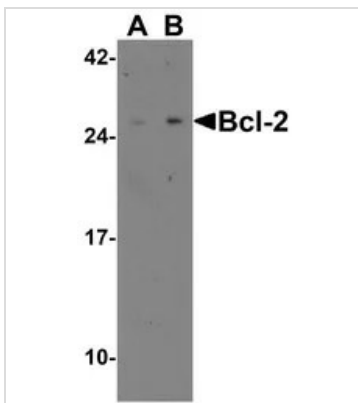
Purchasers shall not, and agree not to enable third parties to, analyze, copy, reverse engineer or otherwise attempt to determine the structure or sequence of the product.



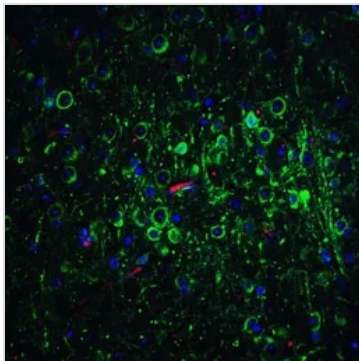
For full product information, images and publications, please visit our [website](#).

**DATA IMAGES**

**GTX31686 WB Image**

WB analysis of MCF-7 and THP-1 cell lysate using GTX31686 Bcl-2 antibody.

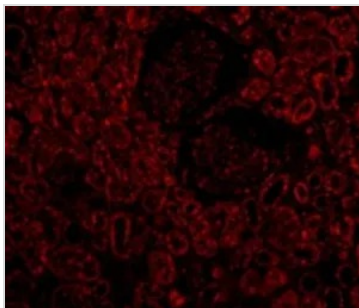

**GTX31686 WB Image**

WB analysis of A-20 cell lysate using GTX31686 Bcl-2 antibody.


**GTX31686 IHC-P Image**

IHC-P analysis of 4% PFA-fixed Mouse Brain Tissue using GTX31686 Bcl-2 antibody.

Dilution : 20µg/mL


**GTX31686 IHC-P Image**

IHC-P analysis of 4% PFA-fixed Human Kidney Cells using GTX31686 Bcl-2 antibody.

Dilution : 10µg/mL



For full product information, images and publications, please visit our [website](https://www.genetex.com).