

Bcl-2 antibody

Cat. No. GTX31687

Host	Rabbit
Clonality	Polyclonal
Isotype	IgG
Applications	WB, ICC/IF, ELISA
Reactivity	Human, Mouse

Package
100 µg

Applications

Application Note

*Optimal dilutions/concentrations should be determined by the researcher.

Suggested dilution	Recommended dilution
WB	1-4µg/mL
ICC/IF	2 µg/mL
ELISA	Assay dependent

Not tested in other applications.

Calculated MW 26 kDa. ([Note](#))

Properties

Form	Liquid
Buffer	PBS
Preservative	0.02% Sodium azide
Storage	Store as concentrated solution. Centrifuge briefly prior to opening vial. For short-term storage (1-2 weeks), store at 4°C. For long-term storage, aliquot and store at -20°C or below. Avoid multiple freeze-thaw cycles.
Concentration	1 mg/ml (Please refer to the vial label for the specific concentration.)
Immunogen	Bcl-2 antibody was raised against a peptide corresponding to 14 amino acids near the middle of human Bcl-2. The immunogen is located within amino acids 80 - 130 of Bcl-2.
Purification	Purified by antigen-affinity chromatography
Conjugation	Unconjugated

Note

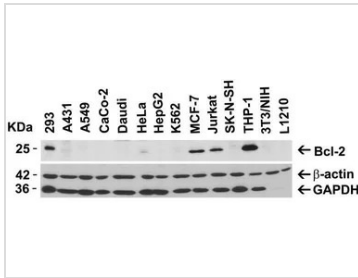
For laboratory research use only. Not for any clinical, therapeutic, or diagnostic use in humans or animals. Not for animal or human consumption.

Purchasers shall not, and agree not to enable third parties to, analyze, copy, reverse engineer or otherwise attempt to determine the structure or sequence of the product.



For full product information, images and publications, please visit our [website](#).

DATA IMAGES

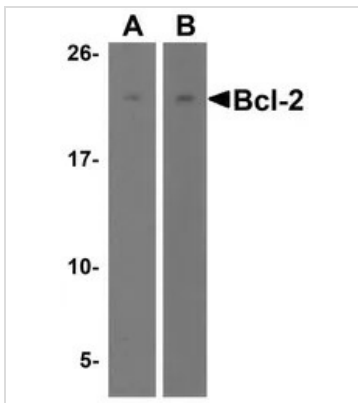


GTX31687 WB Image

WB analysis of various cell lines using GTX31687 Bcl-2 antibody.

Dilution : 2μg/mL

Loading : 15μg of lysates per lane



GTX31687 WB Image

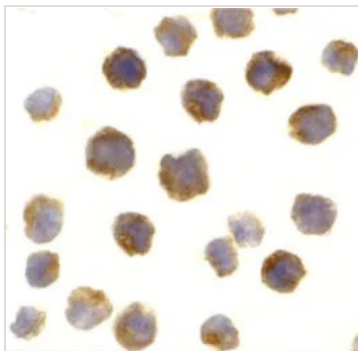
WB analysis of various samples using GTX31687 Bcl-2 antibody.

Lane 1 : Daudi cell lysate

Lane 2 : A-20 cell lysate

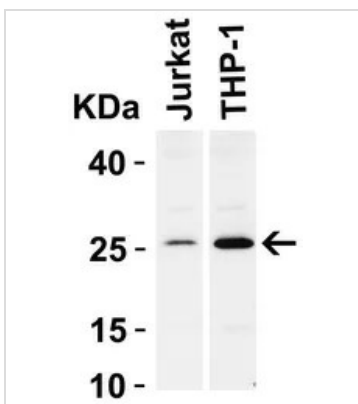
Dilution : 2μg/mL

Loading : 15μg of lysates per lane



GTX31687 ICC/IF Image

ICC/IF analysis of A-20 cells using GTX31687 Bcl-2 antibody.



GTX31687 WB Image

WB analysis of Jurkat and THP-1 cell lysate using GTX31687 Bcl-2 antibody.

Dilution : 2μg/mL

Loading : 15μg of lysates per lane



For full product information, images and publications, please visit our [website](https://www.genetex.com).