

## IRF3 antibody

Cat. No. GTX31695

Host	Rabbit
Clonality	Polyclonal
Isotype	IgG
Applications	WB, ICC/IF, ELISA
Reactivity	Human, Rat

Package  
100 µg

## Applications

## Application Note

\*Optimal dilutions/concentrations should be determined by the researcher.

Suggested dilution	Recommended dilution
WB	1 µg/mL
ICC/IF	2 µg/mL
ELISA	Assay dependent

Not tested in other applications.

Calculated MW 47 kDa. ( [Note](#) )

## Properties

Form	Liquid
Buffer	PBS
Preservative	0.02% Sodium azide
Storage	Store as concentrated solution. Centrifuge briefly prior to opening vial. For short-term storage (1-2 weeks), store at 4°C. For long-term storage, aliquot and store at -20°C or below. Avoid multiple freeze-thaw cycles.
Concentration	1 mg/ml (Please refer to the vial label for the specific concentration.)
Immunogen	IRF3 antibody antibody was raised against a peptide corresponding to 14 amino acids near the center of human IRF3. The immunogen is located within amino acids 150 - 200 of IRF3.
Purification	Purified by antigen-affinity chromatography
Conjugation	Unconjugated

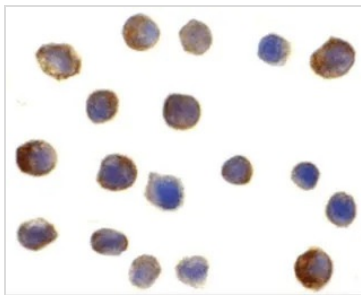
## Note

For laboratory research use only. Not for any clinical, therapeutic, or diagnostic use in humans or animals. Not for animal or human consumption.

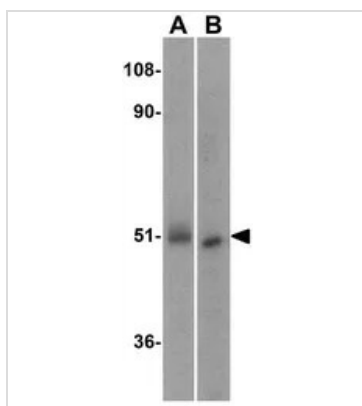
Purchasers shall not, and agree not to enable third parties to, analyze, copy, reverse engineer or otherwise attempt to determine the structure or sequence of the product.



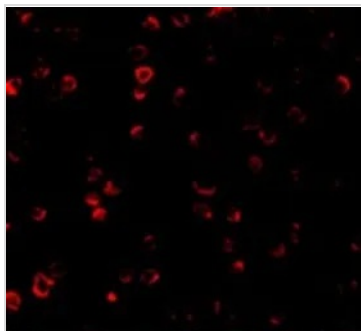
For full product information, images and publications, please visit our [website](#).

**DATA IMAGES**

**GTX31695 ICC/IF Image**

ICC/IF analysis of Ramos cells using GTX31695 IRF3 antibody.  
Working concentration : 2 µg/ml


**GTX31695 WB Image**

WB analysis of (A) human kidney and (B) rat kidney lysate using GTX31695 IRF3 antibody.  
Working concentration : 1 µg/ml


**GTX31695 ICC/IF Image**

ICC/IF analysis of Ramos cells using GTX31695 IRF3 antibody.  
Working concentration : 2 µg/ml



For full product information, images and publications, please visit our [website](#).