

Bim antibody

Cat. No. GTX31697

Host	Rabbit
Clonality	Polyclonal
Isotype	IgG
Applications	WB, ICC/IF, ELISA
Reactivity	Human, Mouse

Package
100 µg

Applications

Application Note

*Optimal dilutions/concentrations should be determined by the researcher.

Suggested dilution	Recommended dilution
WB	5 µg/mL
ICC/IF	10 µg/mL
ELISA	Assay dependent

Not tested in other applications.

Calculated MW 22 kDa. ([Note](#))

Properties

Form	Liquid
Buffer	PBS
Preservative	0.02% Sodium azide
Storage	Store as concentrated solution. Centrifuge briefly prior to opening vial. For short-term storage (1-2 weeks), store at 4°C. For long-term storage, aliquot and store at -20°C or below. Avoid multiple freeze-thaw cycles.
Concentration	1 mg/ml (Please refer to the vial label for the specific concentration.)
Immunogen	Bim antibody was raised against a peptide corresponding to amino acids near the center of human Bim. The sequence is identical to that of mouse and rat. The immunogen is located within amino acids 80 - 130 of Bim.
Purification	Purified by antigen-affinity chromatography
Conjugation	Unconjugated

Note

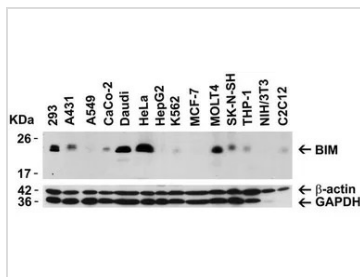
For laboratory research use only. Not for any clinical, therapeutic, or diagnostic use in humans or animals. Not for animal or human consumption.

Purchasers shall not, and agree not to enable third parties to, analyze, copy, reverse engineer or otherwise attempt to determine the structure or sequence of the product.



For full product information, images and publications, please visit our [website](#).

DATA IMAGES

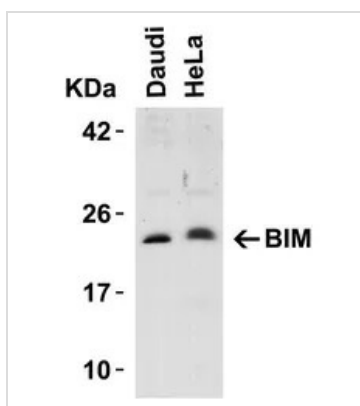


GTx31697 WB Image

WB analysis of various cell lines using GTx31697 Bim antibody.

Dilution : 5µg/mL

Loading : 15µg of lysates per lane

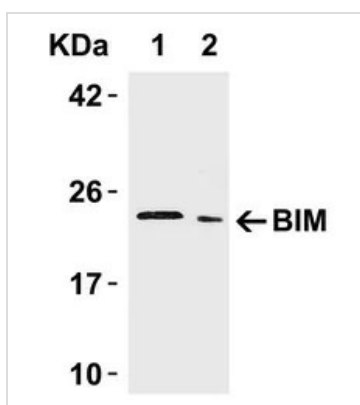


GTx31697 WB Image

WB analysis of Daudi and HeLa cell lysate using GTx31697 Bim antibody.

Dilution : 5µg/mL

Loading : 15µg of lysates per lane



GTx31697 WB Image

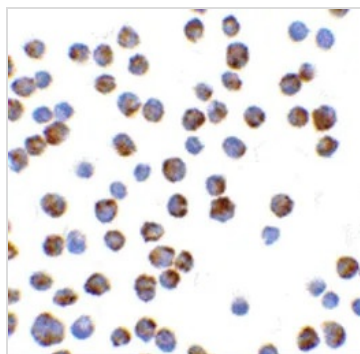
WB analysis of various samples using GTx31697 Bim antibody.

Lane 1 : Human urinary bladder tissue lysate

Lane 2 : Human pancreas tissue lysate

Dilution : 5µg/mL

Loading : 15µg of lysates per lane



GTx31697 ICC/IF Image

ICC/IF analysis of formaldehyde-fixed K562 cells using GTx31697 Bim antibody.

Antigen retrieval : Heat mediation with a citrate buffer (pH6)

Dilution : 10µg/mL



For full product information, images and publications, please visit our [website](http://www.genetex.com).