

Caspase 1 antibody

Cat. No. GTX31702

Host	Rabbit
Clonality	Polyclonal
Isotype	IgG
Applications	WB, IHC-P, ELISA
Reactivity	Human

Package
100 µg

Applications

Application Note

*Optimal dilutions/concentrations should be determined by the researcher.

Suggested dilution	Recommended dilution
WB	0.5 - 2 µg/mL
IHC-P	2 µg/mL
ELISA	Assay dependent

Not tested in other applications.

Calculated MW 45 kDa. ([Note](#))

Product Note Depending on cell lines or tissues used, other cleavage products may be observed.

Properties

Form	Liquid
Buffer	PBS
Preservative	0.02% Sodium azide
Storage	Store as concentrated solution. Centrifuge briefly prior to opening vial. For short-term storage (1-2 weeks), store at 4°C. For long-term storage, aliquot and store at -20°C or below. Avoid multiple freeze-thaw cycles.
Concentration	1 mg/ml (Please refer to the vial label for the specific concentration.)
Immunogen	Caspase-1 antibody was raised against a 16 amino acid synthetic peptide from near the carboxy terminus of human Caspase-1. The immunogen is located within the last 50 amino acids of Caspase-1.
Purification	Purified by antigen-affinity chromatography
Conjugation	Unconjugated



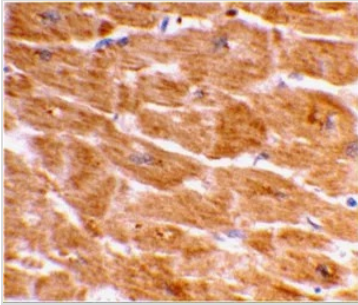
For full product information, images and publications, please visit our [website](#).

For laboratory research use only. Not for any clinical, therapeutic, or diagnostic use in humans or animals. Not for animal or human consumption.

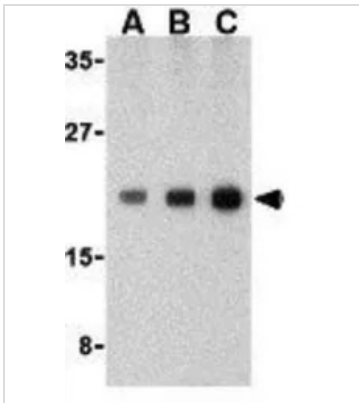
Note

Purchasers shall not, and agree not to enable third parties to, analyze, copy, reverse engineer or otherwise attempt to determine the structure or sequence of the product.

DATA IMAGES

**GTX31702 IHC-P Image**

IHC-P analysis of human heart tissue using GTX31702 Caspase 1 antibody.
Working concentration : 2 µg/ml

**GTX31702 WB Image**

WB analysis of human heart tissue lysate using GTX31702 Caspase 1 antibody.
Working concentration : (A) 0.5, (B) 1, and (C) 2 µg/ml



For full product information, images and publications, please visit our [website](#).