

# ATF6 antibody

**Cat. No. GTX31729**

<b>Host</b>	Rabbit
<b>Clonality</b>	Polyclonal
<b>Isotype</b>	IgG
<b>Applications</b>	WB, ICC/IF, IHC-P, ELISA
<b>Reactivity</b>	Human, Mouse

References ( 1 )

Package

100 µg

## Applications

### Application Note

\*Optimal dilutions/concentrations should be determined by the researcher.

Suggested dilution	Recommended dilution
WB	0.5 - 1 µg/mL
ICC/IF	10 µg/mL
IHC-P	5 µg/mL
ELISA	Assay dependent

Not tested in other applications.

**Calculated MW** 75 kDa. ( [Note](#) )

**Product Note** This antibody was raised against the C-terminus of human ATF6 alpha, meaning it can only detect the uncleaved form.

## Properties

<b>Form</b>	Liquid
<b>Buffer</b>	PBS
<b>Preservative</b>	0.02% Sodium azide
<b>Storage</b>	Store as concentrated solution. Centrifuge briefly prior to opening vial. For short-term storage (1-2 weeks), store at 4°C. For long-term storage, aliquot and store at -20°C or below. Avoid multiple freeze-thaw cycles.
<b>Concentration</b>	1 mg/ml (Please refer to the vial label for the specific concentration.)
<b>Immunogen</b>	ATF6 antibody was raised against a 16 amino acid synthetic peptide from near the carboxy terminus of human ATF6. The immunogen is located within amino acids 470 - 520 of ATF6.
<b>Purification</b>	Purified by antigen-affinity chromatography
<b>Conjugation</b>	Unconjugated



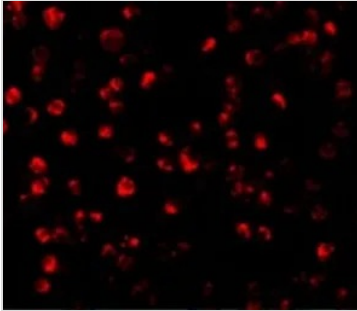
For full product information, images and publications, please visit our [website](#).

For laboratory research use only. Not for any clinical, therapeutic, or diagnostic use in humans or animals. Not for animal or human consumption.

## Note

Purchasers shall not, and agree not to enable third parties to, analyze, copy, reverse engineer or otherwise attempt to determine the structure or sequence of the product.

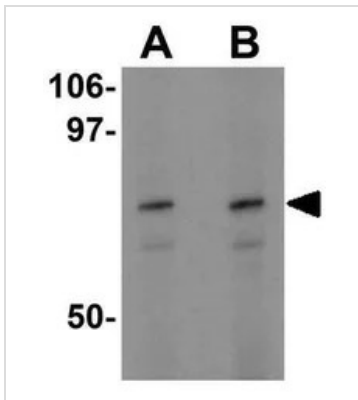
## DATA IMAGES



### GTX31729 ICC/IF Image

ICC/IF analysis of MCF7 cells using GTX31729 ATF6 antibody.

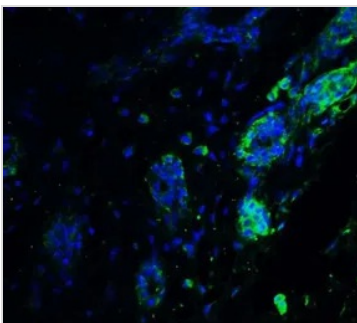
Working concentration : 10 µg/ml



### GTX31729 WB Image

WB analysis of EL4 cell lysate using GTX31729 ATF6 antibody.

Working concentration : (A) 0.5 and (B) 1 µg/ml



### GTX31729 IHC-P Image

IHC-P analysis of human breast tissue using GTX31729 ATF6 antibody.

Working concentration : 20 µg/ml



For full product information, images and publications, please visit our [website](https://www.genetex.com).