

beta Actin antibody

Cat. No. GTX31732

Host	Rabbit
Clonality	Polyclonal
Isotype	IgG
Application	WB, ICC/IF, ELISA
Reactivity	Human, Mouse, Rat

Package
100 µg

APPLICATION

Application Note

*Optimal dilutions/concentrations should be determined by the researcher.

Suggested dilution	Recommended dilution
WB	0.5 - 2 µg/mL
ICC/IF	10 µg/mL
ELISA	Assay dependent

Not tested in other applications.

Calculated MW 42 kDa. ([Note](#))

PROPERTIES

Form	Liquid
Buffer	PBS
Preservative	0.02% Sodium azide
Storage	Store as concentrated solution. Centrifuge briefly prior to opening vial. For short-term storage (1-2 weeks), store at 4°C. For long-term storage, aliquot and store at -20°C or below. Avoid multiple freeze-thaw cycles.
Concentration	1 mg/ml (Please refer to the vial label for the specific concentration.)
Immunogen	Beta-actin antibody was raised against a 16 amino acid synthetic peptide from near the carboxy terminus of human Beta-actin. The immunogen is located within the last 50 amino acids of Beta-actin.
Purification	Purified by antigen-affinity chromatography
Conjugation	Unconjugated

Note

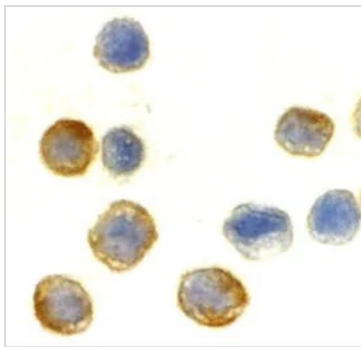
For laboratory research use only. Not for any clinical, therapeutic, or diagnostic use in humans or animals. Not for animal or human consumption.

Purchasers shall not, and agree not to enable third parties to, analyze, copy, reverse engineer or otherwise attempt to determine the structure or sequence of the product.



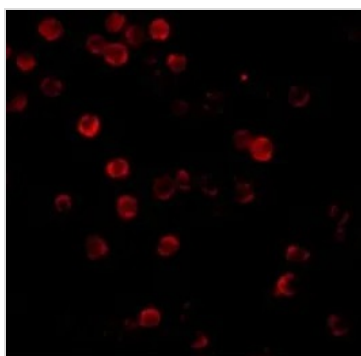
For full product information, images and publications, please visit our [website](#).

DATA IMAGES



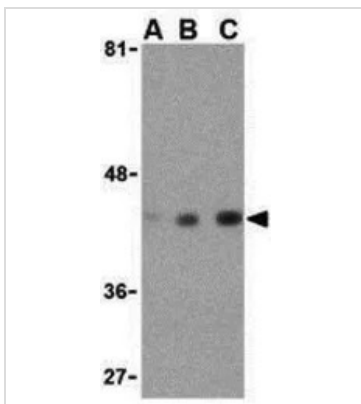
GTX31732 ICC/IF Image

ICC/IF analysis of HeLa cells using GTX31732 beta Actin antibody.
Working concentration : 10 µg/ml



GTX31732 ICC/IF Image

ICC/IF analysis of HeLa cells using GTX31732 beta Actin antibody.
Working concentration : 20 µg/ml



GTX31732 WB Image

WB analysis of HeLa cell lysate using GTX31732 beta Actin antibody.
Working concentration : (A) 0.5, (B) 1, and (C) 2 µg/ml



For full product information, images and publications, please visit our [website](#).