

## Cyclin O antibody

Cat. No. GTX31735

Host	Rabbit
Clonality	Polyclonal
Isotype	IgG
Applications	WB, ELISA
Reactivity	Human, Mouse, Rat

**Package**  
100 µg

## Applications

## Application Note

\*Optimal dilutions/concentrations should be determined by the researcher.

Suggested dilution	Recommended dilution
WB	1 - 2 µg/mL
ELISA	Assay dependent

Not tested in other applications.

**Calculated MW** 38 kDa. ( [Note](#) )**Product Note** At least two isoforms of Cyclin O are known to exist; this antibody will recognize both isoforms.

## Properties

Form	Liquid
Buffer	PBS
Preservative	0.02% Sodium azide
Storage	Store as concentrated solution. Centrifuge briefly prior to opening vial. For short-term storage (1-2 weeks), store at 4°C. For long-term storage, aliquot and store at -20°C or below. Avoid multiple freeze-thaw cycles.
Concentration	1 mg/ml (Please refer to the vial label for the specific concentration.)
Immunogen	Cyclin O antibody was raised against a 13 amino acid synthetic peptide from near the center of human Cyclin O. The immunogen is located within amino acids 90 - 140 of Cyclin O.
Purification	Purified by antigen-affinity chromatography
Conjugation	Unconjugated

## Note

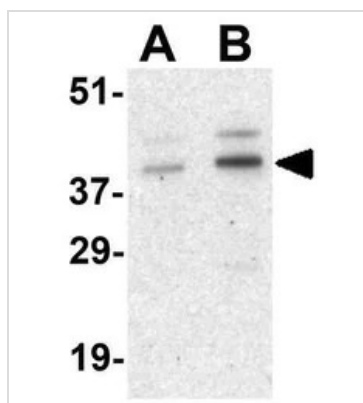
For laboratory research use only. Not for any clinical, therapeutic, or diagnostic use in humans or animals. Not for animal or human consumption.

Purchasers shall not, and agree not to enable third parties to, analyze, copy, reverse engineer or otherwise attempt to determine the structure or sequence of the product.



For full product information, images and publications, please visit our [website](#).

## DATA IMAGES



### GTx31735 WB Image

WB analysis of human bladder tissue lysate using GTx31735 Cyclin O antibody.

Working concentration : (A) 1 and (B) 2  $\mu$ g/ml



For full product information, images and publications, please visit our [website](#).