

## PKR antibody

Cat. No. GTX31746

Host	Rabbit
Clonality	Polyclonal
Isotype	IgG
Applications	WB, IHC-P, ELISA
Reactivity	Human, Rat

Package  
100 µg

## Applications

## Application Note

\*Optimal dilutions/concentrations should be determined by the researcher.

Suggested dilution	Recommended dilution
WB	1 - 2 µg/mL
IHC-P	5 µg/mL
ELISA	Assay dependent

Not tested in other applications.

Calculated MW 62 kDa. ( [Note](#) )

## Properties

Form	Liquid
Buffer	PBS
Preservative	0.02% Sodium azide
Storage	Store as concentrated solution. Centrifuge briefly prior to opening vial. For short-term storage (1-2 weeks), store at 4°C. For long-term storage, aliquot and store at -20°C or below. Avoid multiple freeze-thaw cycles.
Concentration	1 mg/ml (Please refer to the vial label for the specific concentration.)
Immunogen	PKR antibody was raised against a peptide corresponding to 14 amino acids near the amino terminus of human PKR. The immunogen is located within the first 50 amino acids of PKR.
Purification	Purified by antigen-affinity chromatography
Conjugation	Unconjugated

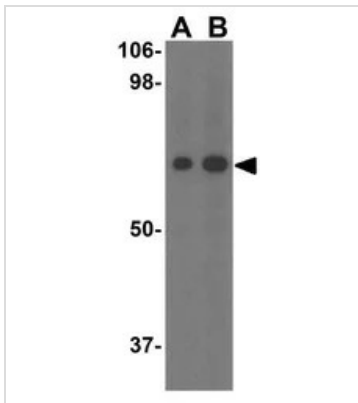
## Note

For laboratory research use only. Not for any clinical, therapeutic, or diagnostic use in humans or animals. Not for animal or human consumption.

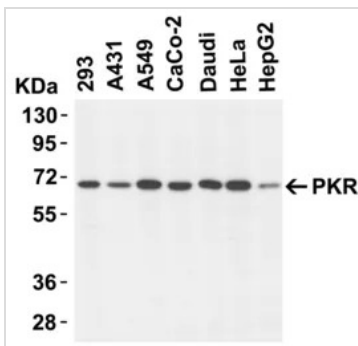
Purchasers shall not, and agree not to enable third parties to, analyze, copy, reverse engineer or otherwise attempt to determine the structure or sequence of the product.



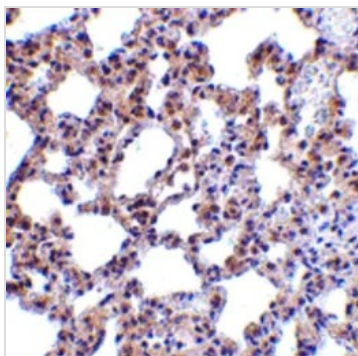
For full product information, images and publications, please visit our [website](#).

**DATA IMAGES**

**GTx31746 WB Image**

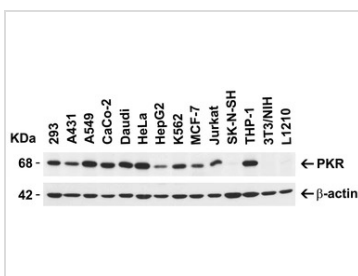
WB analysis of MCF7 cell lysate using GTx31746 PKR antibody.  
Working concentration : (A) 1 and (B) 2 µg/ml


**GTx31746 WB Image**

WB analysis of various sample lysates using GTx31746 PKR antibody.  
Loading : 15µg of lysates per lane  
Dilution : 1 µg/ml


**GTx31746 IHC-P Image**

IHC-P analysis of rat lung tissue using GTx31746 PKR antibody.  
Working concentration : 5 µg/ml


**GTx31746 WB Image**

WB analysis of various sample lysates using GTx31746 PKR antibody.  
Loading : 15µg of lysates per lane  
Dilution : 1 µg/ml



For full product information, images and publications, please visit our [website](http://www.genetex.com).