

## STIM1 antibody

Cat. No. GTX31757

Host	Rabbit
Clonality	Polyclonal
Isotype	IgG
Applications	WB, ICC/IF, IHC-P, ELISA
Reactivity	Human, Mouse, Rat

Package  
100 µg

## Applications

## Application Note

\*Optimal dilutions/concentrations should be determined by the researcher.

Suggested dilution	Recommended dilution
WB	1 - 2 µg/mL
ICC/IF	Assay dependent
IHC-P	2.5 µg/mL
ELISA	Assay dependent

Not tested in other applications.

Calculated MW 77 kDa. ( [Note](#) )

**Product Note** At least two isoforms of STIM1 are known to exist; this antibody will detect only the larger form. This STIM1 antibody is predicted to have no cross-reactivity to STIM2.

## Properties

Form	Liquid
Buffer	PBS
Preservative	0.02% Sodium azide
Storage	Store as concentrated solution. Centrifuge briefly prior to opening vial. For short-term storage (1-2 weeks), store at 4°C. For long-term storage, aliquot and store at -20°C or below. Avoid multiple freeze-thaw cycles.
Concentration	1 mg/ml (Please refer to the vial label for the specific concentration.)
Immunogen	STIM1 antibody was raised against a 24 amino acid synthetic peptide from near the carboxy terminus of human STIM1. The immunogen is located within the last 50 amino acids of STIM1.
Purification	Purified by antigen-affinity chromatography
Conjugation	Unconjugated



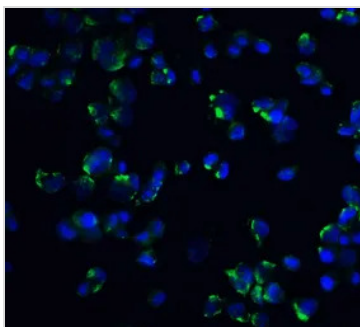
For full product information, images and publications, please visit our [website](#).

For laboratory research use only. Not for any clinical, therapeutic, or diagnostic use in humans or animals. Not for animal or human consumption.

## Note

Purchasers shall not, and agree not to enable third parties to, analyze, copy, reverse engineer or otherwise attempt to determine the structure or sequence of the product.

## DATA IMAGES



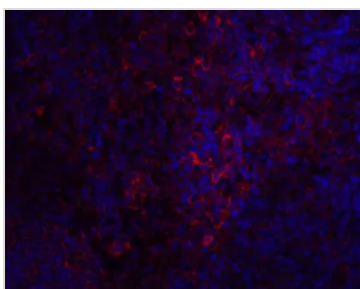
### GTX31757 IHC-P Image

IHC-P analysis of mouse spleen tissue using GTX31757 STIM1 antibody.

Green : Primary antibody

Blue : DAPI

Dilution : 20 µg/ml



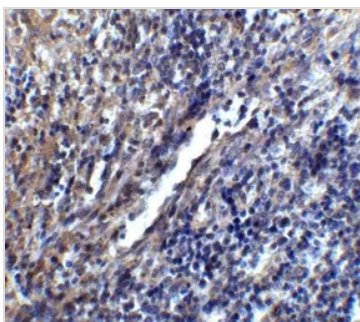
### GTX31757 ICC/IF Image

ICC/IF analysis of HEK293 cells using GTX31757 STIM1 antibody.

Red : Primary antibody

Blue : DAPI

Dilution : 20 µg/ml



### GTX31757 IHC-P Image

IHC-P analysis of mouse spleen tissue using GTX31757 STIM1 antibody.

Working concentration : 5 µg/ml



For full product information, images and publications, please visit our [website](#).