

MORF4 antibody

Cat. No. GTX31761

Host	Rabbit
Clonality	Polyclonal
Isotype	IgG
Applications	WB, ICC/IF, IHC-P, ELISA
Reactivity	Human, Mouse, Rat

Package
100 µg

Applications

Application Note

*Optimal dilutions/concentrations should be determined by the researcher.

Suggested dilution	Recommended dilution
WB	1 - 2 µg/mL
ICC/IF	Assay dependent
IHC-P	5 µg/mL
ELISA	Assay dependent

Not tested in other applications.

Properties

Form	Liquid
Buffer	PBS
Preservative	0.02% Sodium azide
Storage	Store as concentrated solution. Centrifuge briefly prior to opening vial. For short-term storage (1-2 weeks), store at 4°C. For long-term storage, aliquot and store at -20°C or below. Avoid multiple freeze-thaw cycles.
Concentration	1 mg/ml (Please refer to the vial label for the specific concentration.)
Immunogen	MORF4 antibody was raised against a 18 amino acid synthetic peptide from near the amino terminus of human MORF4. The immunogen is located within amino acids 20 - 70 of MORF4.
Purification	Purified by antigen-affinity chromatography
Conjugation	Unconjugated

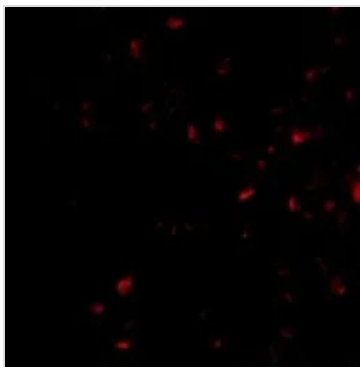
Note

For laboratory research use only. Not for any clinical, therapeutic, or diagnostic use in humans or animals. Not for animal or human consumption.

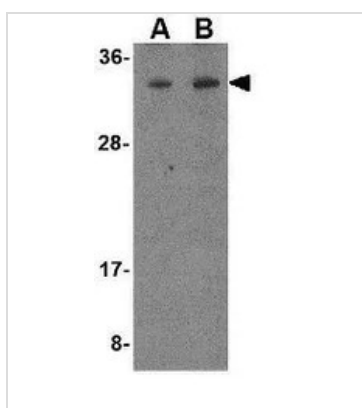
Purchasers shall not, and agree not to enable third parties to, analyze, copy, reverse engineer or otherwise attempt to determine the structure or sequence of the product.



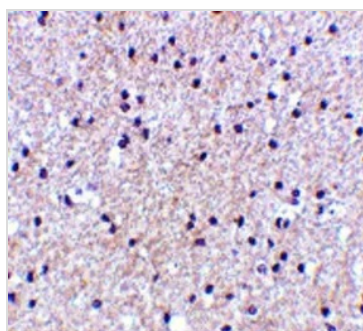
For full product information, images and publications, please visit our [website](#).

DATA IMAGES

GTx31761 ICC/IF Image

ICC/IF analysis of HepG2 cells using GTx31761 MORF4 antibody.
Working concentration : 20 µg/ml


GTx31761 WB Image

WB analysis of K562 cell lysate using GTx31761 MORF4 antibody.
Working concentration : (A) 1 and (B) 2 µg/ml


GTx31761 IHC-P Image

IHC-P analysis of human brain tissue using GTx31761 MORF4 antibody.
Working concentration : 5 µg/ml



For full product information, images and publications, please visit our [website](#).