

FYB antibody

Cat. No. GTX31762

Host	Rabbit
Clonality	Polyclonal
Isotype	IgG
Applications	WB, ICC/IF, ELISA
Reactivity	Human

Package
100 µg

Applications

Application Note

*Optimal dilutions/concentrations should be determined by the researcher.

Suggested dilution	Recommended dilution
WB	0.5 - 1 µg/mL
ICC/IF	10 µg/mL
ELISA	Assay dependent

Not tested in other applications.

Calculated MW 85 kDa. ([Note](#))

Properties

Form	Liquid
Buffer	PBS
Preservative	0.02% Sodium azide
Storage	Store as concentrated solution. Centrifuge briefly prior to opening vial. For short-term storage (1-2 weeks), store at 4°C. For long-term storage, aliquot and store at -20°C or below. Avoid multiple freeze-thaw cycles.
Concentration	1 mg/ml (Please refer to the vial label for the specific concentration.)
Immunogen	FYB antibody was raised against a 17 amino acid synthetic peptide from near the amino terminus of human FYB. The immunogen is located within amino acids 60 - 110 of FYB.
Purification	Purified by antigen-affinity chromatography
Conjugation	Unconjugated

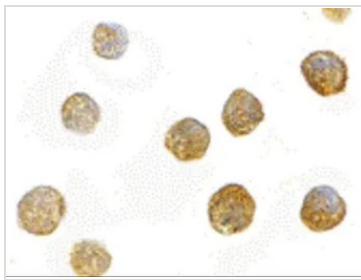
Note

For laboratory research use only. Not for any clinical, therapeutic, or diagnostic use in humans or animals. Not for animal or human consumption.

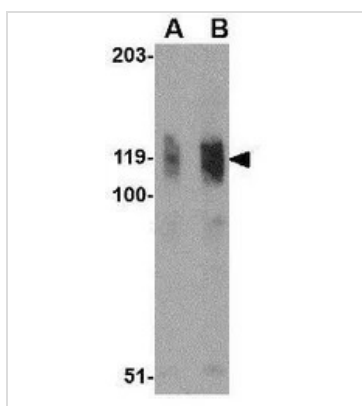
Purchasers shall not, and agree not to enable third parties to, analyze, copy, reverse engineer or otherwise attempt to determine the structure or sequence of the product.



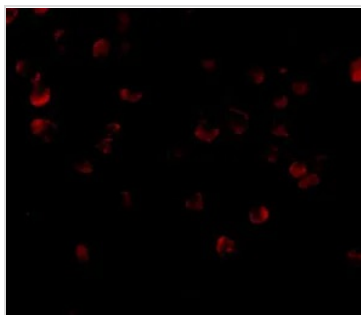
For full product information, images and publications, please visit our [website](#).

DATA IMAGES

GTX31762 ICC/IF Image

ICC/IF analysis of K562 cells using GTX31762 FYB antibody.
Working concentration : 10 µg/ml


GTX31762 WB Image

WB analysis of K562 cell lysate using GTX31762 FYB antibody.
Working concentration : (A) 0.5 and (B) 1 µg/ml


GTX31762 ICC/IF Image

ICC/IF analysis of K562 cells using GTX31762 FYB antibody.
Working concentration : 20 µg/ml



For full product information, images and publications, please visit our [website](https://www.genetex.com).