

GSTP1 antibody

Cat. No. GTX31766

| | |
|--------------|-------------------|
| Host | Rabbit |
| Clonality | Polyclonal |
| Isotype | IgG |
| Applications | WB, IHC-P, ELISA |
| Reactivity | Human, Mouse, Rat |

References (1)

Package

100 µg

Applications

Application Note

*Optimal dilutions/concentrations should be determined by the researcher.

| Suggested dilution | Recommended dilution |
|--------------------|----------------------|
| WB | 0.5 - 1 µg/mL |
| IHC-P | 2.5 µg/mL |
| ELISA | Assay dependent |

Not tested in other applications.

Calculated MW 23 kDa. ([Note](#))

Properties

| | |
|---------------|--|
| Form | Liquid |
| Buffer | PBS |
| Preservative | 0.02% Sodium azide |
| Storage | Store as concentrated solution. Centrifuge briefly prior to opening vial. For short-term storage (1-2 weeks), store at 4°C. For long-term storage, aliquot and store at -20°C or below. Avoid multiple freeze-thaw cycles. |
| Concentration | 1 mg/ml (Please refer to the vial label for the specific concentration.) |
| Immunogen | GSTP1 antibody was raised against a 14 amino acid synthetic peptide from near the center of human GSTP1. The immunogen is located within amino acids 90 - 140 of GSTP1. |
| Purification | Purified by antigen-affinity chromatography |
| Conjugation | Unconjugated |

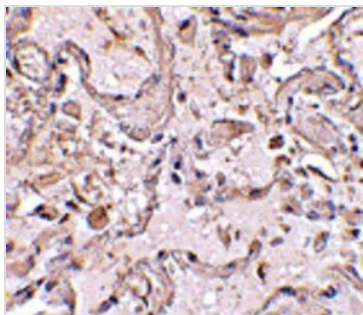
Note

For laboratory research use only. Not for any clinical, therapeutic, or diagnostic use in humans or animals. Not for animal or human consumption.

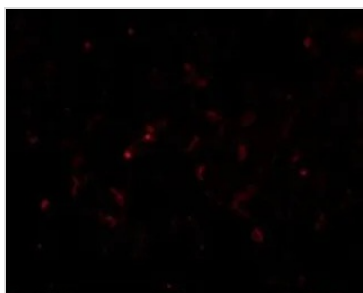
Purchasers shall not, and agree not to enable third parties to, analyze, copy, reverse engineer or otherwise attempt to determine the structure or sequence of the product.



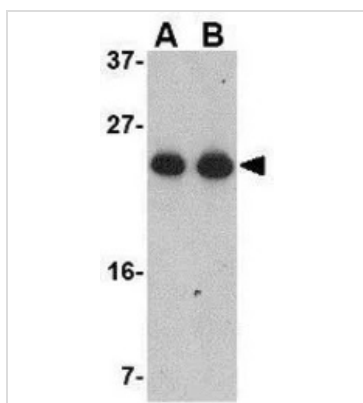
For full product information, images and publications, please visit our [website](#).

DATA IMAGES

GTX31766 IHC-P Image

IHC-P analysis of human lung tissue using GTX31766 GSTP1 antibody.
Working concentration : 2.5 µg/ml


GTX31766 IHC-P Image

IHC-P analysis of human lung tissue using GTX31766 GSTP1 antibody.
Working concentration : 20 µg/ml


GTX31766 WB Image

WB analysis of Jurkat cell lysate using GTX31766 GSTP1 antibody.
Working concentration : (A) 0.5 and (B) 1 µg/ml



For full product information, images and publications, please visit our [website](https://www.genetex.com).